



2025
ANNUAL
REPORT

THE
ROCKWELL
MUSEUM



COLOR!

At The Rockwell Museum, we believe art has the power to ignite conversations, provoke emotions, and inspire new ways of seeing the world.

In 2025, our annual theme, *Color!*, celebrated the hues, shades, and tones that shape our lives and foster creative expressions. From bold strokes of pigment to the subtle interplay of light and shadow, color is a universal language that connects us all.

Robert Weingarten: Palettes



Native American Gallery

TABLE OF CONTENTS

From the Executive Director	5
Rockwell Wrapped: A Look Back at 2025	9
Rockwell by the Numbers	19
Public Events Calendar	23
Exhibitions + Loans	25
Acquisitions	27
Student Exhibitions	33
Supporters	35
Grants + Donations	38
Staff, Board + Volunteers	39

LETTER FROM THE EXECUTIVE DIRECTOR

As I reflect on my inaugural year as Executive Director of The Rockwell Museum, I am filled with immense gratitude for the extraordinary momentum we have built together and the strong sense of purpose that continues to guide this institution forward. When I joined the Museum in January 2025, I stepped into a community deeply committed to the power of art, education, and community engagement. Over the past year, I have had the privilege of listening, learning, and working alongside a hard-working and talented staff, dedicated Board of Trustees, generous donors, committed volunteers, and engaged members who care deeply about the future of this remarkable Museum.

From the outset, the Board charged me with advancing several major institutional priorities: developing a new Strategic Plan, preparing for the Museum's 50th anniversary, progressing toward AAM reaccreditation, and laying the groundwork for future capital planning. I am proud to share that we made meaningful progress across all of these areas in 2025, and this progress is shaping the Museum's future.

One of the most significant accomplishments of the year was the completion of a new strategic plan, *Framing the Future: The Rockwell at 50 and Beyond, 2026-2030*—an ambitious yet pragmatic roadmap informed by participation across the organization and community. The plan reflects a shared vision for strengthening The Rockwell's identity, deepening visitor engagement, investing in our facilities and infrastructure, broadening revenue streams, and expanding our role as a welcoming forum for dialogue, creativity, and learning.

During this inaugural year I devoted time to building relationships throughout the community and across the region. Through a listening tour with staff, donors, volunteers, community stakeholders, and regional partners, I gained invaluable insight into the Museum's strengths, aspirations, and opportunities for growth. Internally, we clarified organizational structures and strengthened departmental alignment to better support the Museum's long-term goals. Fundraising and Marketing & Communications were formally separated into distinct departments, recognizing the increasingly specialized expertise required in both areas as the institution continues to grow.

The year unfolded on a vibrant and energetic note through the annual theme, *Color!*, which infused the Museum's exhibitions, educational initiatives, and public programs with creativity, vibrancy, and visibility. Across the Museum, this spirit of experimentation and engagement strengthened connections with audiences while reinforcing the relevance of American art as a catalyst for conversation and discovery.

We also continued to advance the Museum's collection through strategic acquisitions and commissions that reflect our evolving mission and priorities. A particularly meaningful milestone was securing support from philanthropist Mary Spurrier for a major commissioned work by acclaimed Diné textile artist D.Y. Begay as part of our 50th anniversary celebration. This legacy project underscores the Museum's ongoing commitment to elevating Indigenous voices and expanding the narratives represented within our collection and exhibitions. We also welcomed our inaugural Mary Spurrier Native American Fellow, whose research brought renewed focus to the Museum's holdings of historic Native materials and expanded accessibility to these foundational collections.

Educational and outreach programming flourished throughout 2025. The KIDS ROCKWELL Art Lab experienced significant growth, with attendance increasing through a robust calendar of family programming and workshops. Outreach efforts continued to serve schools across the region, bringing arts education directly into classrooms and communities. The *Alley Art Project* celebrated its seventeenth mural installation, providing meaningful opportunities for youth through mentorship and public expression while continuing to transform the visual landscape of Corning.

At the same time, we experienced a year of dynamic public engagement through lectures, concerts, tours, and member events that welcomed both longtime supporters and first-time visitors into the Museum. Programs such as *TRL!* concerts, *Meet-the-Director* receptions, lectures, and the *Virtual Art History Club* strengthened our ability to connect with our audiences both onsite and online, extending the Museum's reach far beyond the gallery walls.

Behind the scenes, important facilities and infrastructure improvements also took place. Staff office transitions, capital upgrades, technology enhancements, accessibility improvements, and essential building repairs all contributed to strengthening the Museum's operations. Among these enhancements was the completion of newly renovated universally accessible bathrooms on the Mezzanine level, made possible through the generous support of Mary Spurrier. This substantial investment improved the visitor experience while ensuring greater accessibility for all audiences. Together, these projects, while often less visible to the public, are critical to supporting the long-term sustainability of the institution.

Philanthropy reached historic levels in 2025, reflecting extraordinary confidence in the Museum's mission and future direction. Transformational support from donors, members, sponsors, and community partners strengthened our capacity to think ambitiously and plan strategically for years to come. These contributions supported exhibitions, educational initiatives, collection projects, and accessibility efforts that will have lasting impact.

The Museum's visibility also expanded significantly through regional and national media attention, growing digital engagement, and increased community partnerships. From exhibitions and publications to public art initiatives and collaborative programming, The Rockwell continued to elevate its profile as a dynamic institution dedicated to exploring the complexity and richness of the American experience through art.

Above and beyond all the accomplishments, 2025 reinforced what makes The Rockwell Museum so special: a shared belief in the power of art to inspire curiosity, foster dialogue, and strengthen community. The achievements of the year were only possible because of the dedication, generosity, and advocacy of so many individuals who believe deeply in this institution and its mission.

As we celebrate the Museum's 50th anniversary in 2026, I remain profoundly grateful for your partnership and support. Together, we are building on The Rockwell's remarkable legacy and shaping a bold and exciting vision for its next half century.

Erin M. Coe
Executive Director





Corning Incorporated, Visions of America Gallery

ROCKWELL WRAPPED: A LOOK BACK AT 2025

At The Rockwell Museum, we believe art has the power to ignite conversations, provoke emotions, and inspire new ways of seeing the world. The Museum's work united around the annual theme of *Color!*—a celebration of the hues, shades, and tones that shape our lives and foster creative expressions. We are deeply grateful to the members, supporters, artists, educators, and friends who shared this colorful year with us.





WELCOMING ERIN M. COE

The year began with the arrival of Erin M. Coe as The Rockwell Museum's 10th Executive Director. Early in her tenure, Erin undertook a comprehensive listening tour, meeting with artists, civic leaders, community members, and regional partners to better understand the Museum's role within Corning and the Southern Tier. These conversations helped reframe priorities through a community-centered lens and informed a refreshed vision for the future.

Throughout the year, members and supporters gathered at receptions, events, and informal gatherings to welcome Erin and share their hopes for The Rockwell. We are grateful to the many community members who warmly welcomed Erin and generously extended their time and perspective.



VISITOR ENHANCEMENTS

In 2025, The Rockwell introduced refreshed interpretive tools designed to deepen visitor connection with the collection. Chief among them was the *Art & Healing Guide*, developed in collaboration with local care organizations.

Made possible with support from Art Bridges, the guide was shaped by community voices and invited visitors to engage with art through personal experience. It focuses on themes such as memory, illness, grief, and resilience, with artworks paired with prompts and reflections from partners including the Alzheimer's Association, Bampa's House, CareFirstNY, and Memory Maker Consulting.

The *Art & Healing Guide* is dedicated to Tali Sutton, former CEO of CareFirstNY, who passed away in early 2025. Tali was a strong advocate for community care and a generous supporter of this collaboration. We thank these partners for trusting the Museum with their perspectives and stories.

Available onsite and online, the guide reframes the Museum experience as one of empathy, reflection, and care.



INAUGURAL MARY SPURRIER FELLOW IN NATIVE AMERICAN ART

In 2025, The Rockwell Museum appointed Abby Mikalauskas as the inaugural Mary Spurrier Fellow in Native American Art. Beginning in September, Mikalauskas worked with Amanda Lett, Curator of Collections and Exhibitions, on original research into the Native American art collection.

Building on Mikalauskas' graduate research centered on Dakhóta material culture, she focused on unattributed beadwork and painted hides created by Great Plains communities. Mikalauskas' work helped enhance understanding of 472 historic Indigenous belongings and shined a light on obscured histories through careful contextual research. We are grateful to Mikalauskas for the care, rigor, and commitment she brought to the fellowship and for sharing this work with the Museum and its audiences.

Rockwell Refracted: Colorful Selections from the Permanent Collection



SPOTLIGHT ON THE COLLECTION

The *Color!* theme offered an opportunity to shed new light on the permanent collection through dynamic special exhibitions. From February through May, *Dusk 'til Dawn: The Color of Night* explored how artists captured nightfall, artificial light, and the changing sky, featuring works by Frederic Remington, Kay WalkingStick, and others. During the summer months, *Rockwell Refracted: Colorful Selections from the Permanent Collection* highlighted how artists across cultures and time used color to express emotion and meaning. We thank our visitors for engaging deeply with these exhibitions and bringing their own perspectives to conversations around color. Exhibitions in 2025 were made possible with generous support from Mary Spurrier.

The collection expanded through acquisitions made possible by donors and supporters committed to the Museum's long-term stewardship, including works by Hock E Aye Vi Edgar Heap of Birds, Cara Romero, Eastman Johnson, and Devan Shimoyama.

Left page, upper right image: Devan Shimoyama (b. 1989), *February*, 2022, silk flowers, beads, and rhinestones on fabric, 50 x 75 in. Museum Purchase with the Robert and Hertha Rockwell Deaccession Fund, 2025.12

THE EVERBRIGHT & ART LAB

Color came to life in the KIDS ROCKWELL Art Lab through *Color Play*, an interactive exhibition designed to support early arts education. Families explored how color shapes creativity, emotion, and space through hands-on activities inspired by works in the galleries.

In 2025, we unveiled the newest addition to the Art Lab—the Everbright, a luminous light-board interactive inviting visitors to mix colors and create patterns. With inspirational designs created by local artists Tori Riina and Shannah Warwick, the Everbright sparked experimentation and playful discovery. The exhibition *Color Play* was made possible with generous support from Toby Wollin and Darryl M. Wood and Melissa Gambol.

Paired with a full calendar of *Family Days*, *Summer Explorers*, and *Lil Rockwell* programs, the Art Lab continued to grow as a space for creativity and connection. We thank the families, caregivers, collaborative artists, and community partners who filled the Art Lab with curiosity and joy.



SOLD-OUT PROGRAMS & EVENTS

In 2025, educational programs sparked lively participation. The *Virtual Art History Club* and the in-person *Lecture Series* returned with in-depth conversations led by Anna Warfield, Cécile R. Ganteaume, Shannon Perich, Robert Weingarten, and Executive Director Erin M. Coe, offering fresh perspectives for art enthusiasts of all backgrounds.

The Rockwell also continued to serve as a vibrant gathering place for music and connection. The *TRL! (The Rockwell Live!)* concert series drew enthusiastic, sold-out audiences, featuring a dynamic mix of new and returning performers including SingTrece and Stone Cold Miracle, Ariel Arbisser, the FAR Trio, The Ladles, and Rachel Sumner & Traveling Light. We thank the audiences who showed up night after night, filling the Museum with music, conversation, and shared experience.



SMITHSONIAN YOUTH LEADERSHIP TEAM

The Rockwell's partnership with the Smithsonian continued to support local students as they stepped into national leadership opportunities through the Smithsonian Youth Leadership Team (YLT). For the second year in a row, the Museum and the Corning-Painted Post High School Learning Center were selected as one of only four Smithsonian Affiliate representatives.

Students Tyrell Rivers, Luca Sauter, and Grehyson Perry represented Corning as teen ambassadors in Washington, D.C. Hosted by the National Museum of American History, the immersive week included behind-the-scenes tours, hands-on workshops, and collaboration with peers from across the country.

Through art, history, and science, students reframed their understanding of museums as places for dialogue, impact, and leadership. We are grateful to these students for representing our region with thoughtfulness and enthusiasm.

BUILDING UPGRADES

Historic City Hall received a lot of love in 2025 as The Rockwell invested in accessibility, preservation, and visitor comfort. Early in the year, the third-floor galleries were refreshed with new coat of paint in preparation for updated collection installations. A long-held goal was realized with the addition of an all-gender, accessible companion-care restroom and renovations to existing restrooms, made possible through the generous support of Mary Spurrier. Improvements included a universal changing station and other accessibility upgrades.

Additional projects—such as upgraded WiFi, parking lot repaving, landscaping improvements, exterior trim restoration, a boiler replacement, new carpeting, and roof repairs—were made with the goal of better serving everyone who comes through our doors now and for decades to come.



ANNA WARFIELD: FAST COLORS MAKE A SLOW EYE

For the seventh annual *Antigravity* exhibition, The Rockwell presented *Fast Colors Make a Slow Eye* by Anna Warfield. The site-specific installation transformed the Rotunda with suspended, letter-based forms in soft pink hues that shifted between legibility and abstraction as visitors moved through the space.

Using dyes and materials designed to fade over time, Warfield embraced ephemerality as both concept and process. The installation combined poetry, research, and playful form to explore identity, the body, and contemporary life, inviting visitors to slow down and sit with contradiction.

Warfield collaborated closely with students from the International Baccalaureate Visual Arts Programme at Corning-Painted Post High School, whose creativity and commitment were integral to the work. We are grateful to the student artists and educators who made this collaboration so meaningful and impactful. The *Antigravity* project culminated in Warfield's participation in a three-day residency at the Corning Museum of Glass Hot Shop.

Top image: Anna Warfield (b. 1995), *Fast Color Make a Slow Eye*, 2025, original poem, hand-dyed muslin, batting, thread, hanging hardware.



EXPANDED OUTREACH INITIATIVES

The Rockwell continued to expand its outreach efforts in response to evolving needs in regional schools. In 2025, the Museum partnered with educators to bring programming directly into classrooms, reaching more than 1,000 seventh and eighth-grade Spanish students at Elmira's Ernie Davis Academy and more than 1,500 students across the Corning-Painted Post School District.

Through specially designed lessons and Learning Trunks containing authentic art and folklife objects, students explored Día de los Muertos (Day of the Dead) traditions in culturally responsive ways. These experiences were supported by online modules and an invitation to the Museum's annual community celebration. We are especially grateful to the educators, students, and school partners who welcomed the Museum into their classrooms and shaped these programs with their expertise and insight.





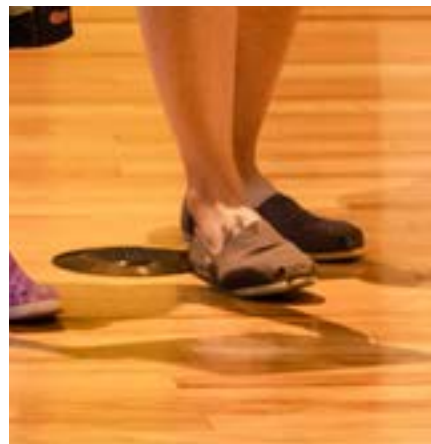
32,371
MUSEUM VISITORS

5,783
ART LAB VISITORS



MUSEUMS FOR ALL PASSES BROUGHT

328
VISITORS



21
VOLUNTEERS SERVED

6,983
STUDENTS



271
GUESTS CELEBRATED BIRTHDAYS AT KIDS ROCKWELL ART LAB

57
WORKS WERE ACQUIRED



TONS
OF SMILES SHARED





Contemporary Art Gallery

PUBLIC EVENTS CALENDAR

January 2

Lil Rockwell | Project: Color!

January 15

Virtual Members-Only Art History Club | A Deep Dive into Paradise Park with Stephen Towns & Lu Vickers

January 15

Corning-Painted Post High School Elective Art: Chromatic Connections Student Exhibition Reception

January 20

Rev. Dr. Martin Luther King Jr.'s Birthday

January 22

Corning-Painted Post Unified Art: Color, Shape & Texture Student Exhibition Reception

January 27

Corning Painted Post School District Conference Day | Come to the Art Lab!

January 30

Color! Lecture Series | Loaded Color: How Plenty of Pink and Bits of Blue Imbue Meaning with Anna Warfield

February 6

Lil Rockwell | Story Hour: Friendship

February 5

Virtual Members-Only Art History Club | Dusk 'til Dawn: The Color of Night

February 11

Orchestra of the Southern Finger Lakes | Musicians' Choice Chamber Series

February 14

TRL! Concert in the Gallery featuring Rachel Sumner & Traveling Light

February 15 - 23

Mid-Winter Break | Art Lab Open All Week Long!

February 22

Family Day | TCO's Opera-Go-Round Presents *The Ugly Duckling*

February 20

North to Freedom | A Documentary Film Written & Produced by Brian Frey

March 4

Gallery Talk | Dusk 'til Dawn: The Color of Night

March 6

Lil Rockwell | Project: Camouflaged Animals

March 7

Hues & Symbols: The Art of Expression Student Exhibition Reception

March 7

TRL! Concert in the Gallery featuring The Ladles

March 13

Color! Lecture Series | Diné (Navajo) Tapestry Artist, DY Begay: A Master Colorist with Cécile R. Ganteaume

March 24

Corning Painted Post School District Conference Day | Come to the Art Lab!

March 28

Rockwell Ambassador-Only | Antigravity Exhibition Opening: Anna Warfield

April 1

Gallery Talk | A Still Life Illusion

April 3

Lil Rockwell | Story Hour: Earth Day

April 5

Family Day | Robots Invade the Art Lab!

April 10

Corning-Painted Post High School: International Baccalaureate Visual Arts Student Exhibition Opening Reception

April 12 - 20

Spring Break | Art Lab Open All Week Long!

May 1

Lil Rockwell | Project: A Rainbow of Flowers

May 15

Color! Lecture Series | An Evening with The Rockwell Museum's New Executive Director, Erin M. Coe

May 24

GlassFest: Free Admission at KIDS ROCKWELL Art Lab

May 26

Memorial Day | Come to the Art Lab!

May 29

Rockwell Remix | Member Appreciation Event

June 1 - 30

Celebrate Pride with The Rockwell

June 5

Lil Rockwell | Stroller Walk: Color Play

June 5

Alley Art Project: Opening Reception & Mural Design Unveiling High School Learning Center Student Exhibition

June 11

TRL! Music on the Terrace featuring FAR Trio

July 1

Summer Explorers | Explore Monotype with Tori Riina

July 3

Lil Rockwell | Story Hour: A Rainbow of Food

July 8

Summer Explorers | Explore Monotype with Tori Riina

July 15

Summer Explorers | Rainbow Feelings Card Decks with Shannah Warwick

July 16

TRL! Music on the Terrace featuring Ariel Arbisser

July 22

Summer Explorers | Rainbow Feelings Card Decks with Shannah Warwick

July 29

Summer Explorers | Plaster Cast Wall Sculptures

August 5

Summer Explorers | Plaster Cast Wall Sculptures

August 6

TRL! Music on the Terrace featuring SingTrece and Stone Cold Miracle

August 7

Lil Rockwell | Stroller Walk: I-Spy Colors and Shapes

August 12

Summer Explorers | Impressionist Tote Bags

August 19

Summer Explorers | Impressionist Tote Bags

August 21

17th Alley Art Project: Public Ribbon Cutting and Celebration [1]

September 20

Celebrate the Harvest with The Rockwell!

September 25

Silver Dollar Society | Annual Donor Recognition Event

October 1

High School Learning Center | Identity and the Artist Performance

October 2

Lil Rockwell | Stroller Walk: Día de los Muertos

October 16

Gallery Talk | Robert Weingarten's Palettes

October 18

Annual Día de los Muertos (Day of the Dead) Family Celebration

October 30

Virtual Color! Lecture Series | Looking Closely at Robert Weingarten's Photography of Painter's Palettes with Shannon Perich

November 6

November: Free Admission for Veterans

November 6

Lil Rockwell | Project: Beautiful Beads

November 6

Virtual Members-Only Art History Club | Collecting for the Future: New Acquisitions at The Rockwell

November 8

Founder's Day: Free Admission

November 30

Museum Store Sunday

December 3

Gingerbread Invitational Opening Reception

December 4

Lil Rockwell | Story Time: Gingerbread

December 6

Holiday Open House

December 6

Family Day | Sparkle

December 7

Holiday Open House



EXHIBITION CALENDAR

2025 exhibitions were made possible with support from Mary Spurrier

Minna Citron: Color and Shape
January 17 – March 24, 2025

Annual Theme Gallery: Think Pink!
January 14 – April 30, 2025

Dusk 'til Dawn: The Color of Night [1]
February 7 – May 12, 2025

Antigravity: Fast Colors Make a Slow Eye [3]
March 28, 2025 – March 17, 2026

Rockwell Refracted: Colorful Selections from the Permanent Collection
May 23 – September 14, 2025

Color Play
May 24 – September 7, 2025

Robert Weingarten: Palettes [2]
September 26 – January 5, 2026

Gingerbread Invitational: Color!
November 29 – December 31, 2025

The 2025 Gingerbread Invitational was made possible by LeChase Construction Services, LLC.



1



2



3

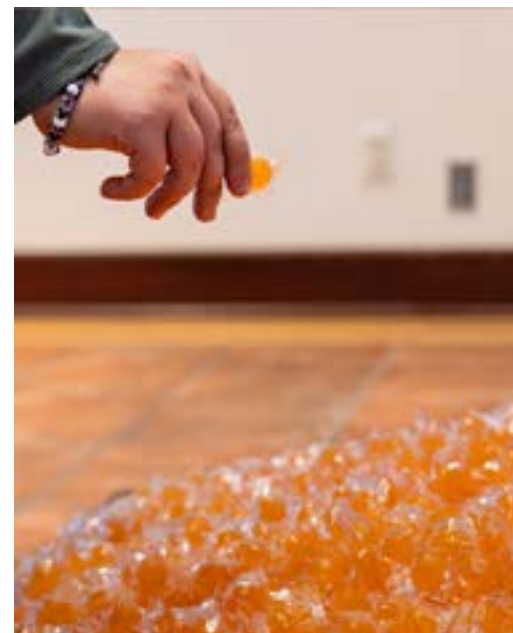
FEATURED INCOMING LOANS



Bernice Bing (1936-1998)
Burney Falls, 1980
Oil on canvas
95 x 77 in.
On loan from Art Bridges. AB.2024.13.



William T. Williams (b. 1942)
Walter's Advice, 1970
Oil on canvas
84 x 85 in.
On loan from Art Bridges. AB.2023.23.



Felix Gonzalez-Torres (American born Cuba, 1957-1996)
"Untitled" (L.A.), 1991
Green candies in clear wrappers, endless supply, original weight 50 lb, size varies
On loan from Art Bridges and Crystal Bridges Museum of Art. AB.2018.20.



William S. Johnson
Art Class, c. 1939-1940
Oil on plywood
33 x 29 in.
On loan from the Smithsonian American Art Museum, Gift of the Harmon Foundation. 1967.59.579.

ACQUISITIONS

Kenda North
2025.1.1
Red Shoes from the "Urban Pools" Series
2009-2025
Ultrachrome pigment print on archival paper
17 x 22 in.
Gift of Kenda North & The Museum Project

Kenda North
2025.1.2
Girl with Violin from the "Urban Pool" Series
2006-2025
Ultrachrome pigment print on archival paper
17 x 22 in.
Gift of Kenda North & The Museum Project

Kenda North
2025.1.3
Touch from the "Submerged" Series
2012-2025
Ultrachrome pigment print on archival paper
17 x 22 in.
Gift of Kenda North & The Museum Project

Kenda North
2025.1.4
Bliss from the "Submerged" Series
2012-2025
Ultrachrome pigment print on archival paper
17 x 22 in.
Gift of Kenda North & The Museum Project

Kenda North
2025.1.5
Desire from the "Submerged" Series
2012-2025
Ultrachrome pigment print on archival paper
17 x 22 in.
Gift of Kenda North & The Museum Project

Darryl Curran
2025.2.1
Hollywood Cloud
1980
Cyanotype
11 x 14 5/8 in.
Gift of the Artist

Darryl Curran
2025.2.3
Untitled
2007
Non-silver gum bichromate photogram
10 1/4 x 7 1/8 in.
Gift of the Artist

Darryl Curran
2025.2.8
Untitled
2007
Non-silver gum bichromate photogram
7 x 5 in.
Gift of the Artist

Darryl Curran
2025.2.5
Untitled
2007
Non-silver gum bichromate photogram
9 3/4 x 6 5/16 in.
Gift of the Artist

Darryl Curran
2025.2.4
Untitled
2008
Non-silver gum bichromate photogram
10 1/2 x 8 3/4 in.
Gift of the Artist

Darryl Curran
2025.2.7
Untitled
2007
Non-silver gum bichromate photogram
8 x 5 in.
Gift of the Artist

Darryl Curran
2025.2.2
Untitled
2007
Non-silver gum bichromate photogram
9 13/16 x 7 1/4 in.
Gift of the Artist

Darryl Curran
2025.2.9
Five Squash Blossoms
1995
Scanogram on archival pigment print
17 15/16 x 11 1/2 in.
Gift of the Artist

Darryl Curran
2025.2.6
Untitled
2007
Non-silver gum bichromate photogram
7 1/4 x 5 1/16 in.
Gift of the Artist

Darryl Curran
2025.2.10
Quilt Pattern, Broach, Necklace, Belt from the "All About Doris" portfolio
2001
Scanogram on archival pigment print
17 1/8 x 12 in.
Gift of the Artist

Barry Andersen
2025.3.1
Alabama #18-6
1987; printed 2025
Color negative film printed on Epson Exhibition Fiber Paper
14 x 18 in.
Gift of the Artist

Barry Andersen
2025.3.2
Alabama #19-6
1987; printed 2025
Color negative film printed on Epson Exhibition Fiber Paper
14 x 18 in.
Gift of the Artist

Barry Andersen
2025.3.3
Florida #91
1983; printed 2025
Black and white negative 4x5 film printed on Epson Exhibition Fiber Paper
14 x 18 in.
Gift of the Artist

Barry Andersen
2025.3.4
Four Trees, Arizona
2000; printed 2025
Color negative film printed on Epson Exhibition Fiber Paper
14 x 18 in.
Gift of the Artist

Barry Andersen
2025.3.5
Sky, Rain and Sea, #4479
2008; printed 2025
Digital photograph printed on Epson Exhibition Fiber Paper
14 3/4 x 20 in.
Gift of the Artist

Suda House
2025.4.1
Diana from the Aqueous Myths Series
1986
Silver-halide dye print (Fuji)
Dimensions: 20 7/8 x 17 in.
Gift of the Artist

Suda House
2025.4.2
Lamia from the "Aqueous Myths" Series
1986
Silver-halide dye print (Fuji)
20 7/8 x 17 in.
Gift of the Artist

Suda House
2025.4.3
Leda from the "Aqueous Myths" Series
1984
Silver-halide dye print (Fuji)
20 7/8 x 17 in.
Gift of the Artist

Suda House
2025.4.4
Rhea from the "Aqueous Myths" Series
1984
Silver-halide dye print (Fuji)
20 7/8 x 17 in.
Gift of the Artist

Suda House
2025.4.5
Sedra from the "Aqueous Myths" Series
1986
Silver-halide dye print (Fuji)
20 7/8 x 17 in.
Gift of the Artist

Michael Stone
2025.5.1
Buyer's Remorse
2020
Digital paint; archival ink and paper
15 1/16 x 10 1/16 in.
Gift of the Artist

Michael Stone
2025.5.2
Diablo Canyon #2
2016
Digital paint; archival ink and paper
10 1/16 x 15 1/16 in.
Gift of the Artist

Michael Stone
2025.5.3
Purple Stump
2017
Digital paint; archival ink and paper
10 1/16 x 15 1/16 in.
Gift of the Artist

Michael Stone
2025.5.4
The Mountain
2010
Layered collage; archival ink and paper
10 1/16 x 15 1/16 in.
Gift of the Artist

Michael Stone
2025.5.5
A Long Time Ago
2016
Digital paint; archival ink and paper
15 1/16 x 10 1/16 in.
Gift of the Artist

Michael Stone
2025.5.6
American in Paris #1
2012
Layered collage; archival ink and paper
10 1/16 x 15 1/16 in.
Gift of the Artist

Michael Stone
2025.5.7
Clean Up
2017
Layered collage; archival ink and paper
15 1/16 x 10 1/16 in.
Gift of the Artist

Michael Stone
2025.5.8
Concrete
2012
Layered collage; archival ink and paper
10 1/16 x 15 1/16 in.
Gift of the Artist

Michael Stone
2025.5.9
I Cannot Come Out and Play with You, Because of Covid
2020
Digital paint; archival ink and paper
15 1/16 x 10 1/16 in.
Gift of the Artist

Michael Stone
2025.5.10
Interstate Art
2016
Digital paint; archival ink and paper
10 1/16 x 15 1/16 in.
Gift of the Artist

ACQUISITIONS

Michael Stone
2025.5.11
Sea Sick
2017
Layered collage; archival ink and paper
15 1/16 x 10 1/16 in.
Gift of the Artist

Hock E Aye Vi Edgar heap of Birds
2025.6
Native Hosts for New York
2025
Metal sign panel with mylar text
36 x 18 in.
Museum Purchase with funds from the Robert and Hertha Rockwell Deaccession Fund

Robert Gwathmey
2025.7
Girl with Guitar
1965
Oil on canvas
16 x 20 in.
Museum Purchase with the Robert and Hertha Rockwell Deaccession Fund in honor of Silver Dollar Society

Samuel Levi Jones
2025.8
Time Will Tell
2024
Pulped history books, and deconstructed law books on canvas
20 x 20 in.
Museum Purchase with Funds
Donated by Mary Spurrier

Melanie Walker
2025.9.1
Misalliance from the "Mis-Nomer Project" Series
1992; printed 2025
Black and white film, ortholitho film, paint, sandpaper and Polaroid 55 P/N film
14 5/8 x 12 in.
Gift of the Artist

Melanie Walker
2025.9.4
Mischoice from the "Mis-Nomer Project" Series
1992; printed 2025
Black and white film, ortholitho film, paint, sandpaper and Polaroid 55 P/N film
14 x 12 in.
Gift of the Artist

Melanie Walker
2025.9.2
MisTree (Mystery) from the "Mis-Nomer Project" Series
1992; printed 2025
Black and white film, ortholitho film, paint, sandpaper and Polaroid 55 P/N film
Dimensions: 12 x 12 in.
Gift of the Artist

Melanie Walker
2025.9.3
Stage/City Life from the "Household Chronicles" Series
2016
Black and white film, ortholitho film, paint, sandpaper and Polaroid 55 P/N film
11 3/8 x 17 1/2 in.
Gift of the Artist

Melanie Walker
2025.9.5
Tabacco (Self-Portrait)
1972
Black and white film, ortholitho film, paint, sandpaper and Polaroid 55 P/N film
12 x 12 in.
Gift of the Artist

Todd Walker
2025.10.1
Creosote
1980
Black and white negatives with color assigned values; printed on a lithographic press
7 5/8 x 10 5/8 in.
Gift of the Walker Image Trust

Todd Walker
2025.10.2
Creosote II
1981
Black and white negatives with color assigned values; printed on a lithographic press
10 9/16 x 7 5/8 in.
Gift of the Walker Image Trust

Todd Walker
2025.10.3
Three Saguaros
1981
Black and white negatives with color assigned values; printed on a lithographic press
7 5/8 x 10 5/8 in.
Gift of the Walker Image Trust

Todd Walker
2025.10.4
Pearl, digital
1984
Black and white negatives with color assigned values; printed on a lithographic press
10 7/8 x 8 in.
Gift of the Walker Image Trust

Todd Walker
2025.10.5
Shari
1977
Black and white negatives with color assigned values; printed on a lithographic press
7 1/8 x 5 11/16 in.
Gift of the Walker Image Trust

Canuupa Hanska Luger
2025.11
SURVIVA: A Future Ancestral Field Guide
2025
Bound illustrated and annotated paperback book
8 5/16 x 5 1/2 x 5/8 in.; 160 pp.
Museum Purchase

Devan Shimoyama
2025.12
February
2022
Silk flowers, beads, and rhinestones on fabric
50 x 75 in.
Museum Purchase with the Robert and Hertha Rockwell Deaccession Fund

Dakota Mace
2025.13
Asdzáq Nádleeheé (Changing Woman)
2024
Cyanotype dyed with Osage Orange, glass beadwork
35 x 36 in.
Museum Purchase with the Robert and Hertha Rockwell Deaccession Fund

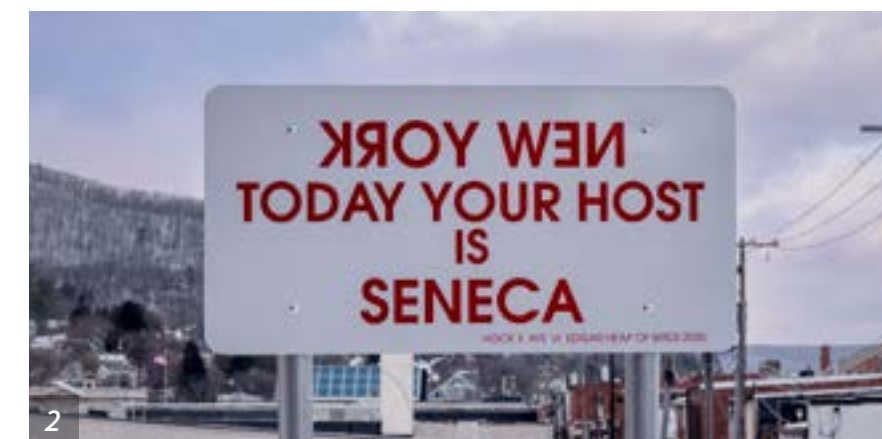
Eastman Johnson
2025.14
Study from Life: Down East
1860
Oil on canvas
17 7/8 x 14 in.
Museum Purchase with the Robert and Hertha Rockwell Deaccession Fund

Cara Romero
2025.15
The Zenith
2022
Photograph on Legacy Platine paper
40 x 45 in.
Museum Purchase with the Robert and Hertha Rockwell Deaccession Fund

Anna Warfield
2025.16.1ab
Strip and Flash
2025
Blown glass
Strip: 5 3/8 x 6 7/8 in.; Flash: 10 1/16 x 4 3/4 in.
Gift of Anna Warfield

Anna Warfield
2025.16.2
Fast Color Make a Slow Eye
2025
Blown glass
5 11/16 x 9 5/8 in.
Gift of Anna Warfield

Anna Warfield
2025.16.3
Thought (Bubble)
2025
Blown glass
4 15/16 x 7 3/16 in.
Gift of Anna Warfield





Robert Weingarten: Palettes

STUDENT EXHIBITION CALENDAR

Color, Shape, & Texture

Corning-Painted Post Unified Art
December 1, 2024 – February 23, 2025

This exhibition was made possible with support from Corning-Painted Post School District's Special Education Parent Teacher Association (SEPTA).

Chromatic Connections [2]

Corning-Painted Post High School Elective Art
January 11 – March 2, 2025

Hues & Symbols: The Art of Expression

The Alternative School for Math & Science
March 7 – May 4, 2025

International Baccalaureate Visual Arts [1]

Corning-Painted Post High School
March 28 – April 30, 2025

Alley Art Project: Colorscape

High School Learning Center
June 5 – September 1, 2025

The 2025 Alley Art Project was made possible with support from Mary Spurrier, The Triangle Fund, The Swindells Family Fund, the Community Foundation of Elmira-Corning and the Finger Lakes, Connors Mercantile, First Heritage Federal Credit Union, Guthrie, Members of The Rockwell Museum Board of Trustees, and the Executive Director.

Color, Shape & Texture

Corning-Painted Post Unified Art
December 6, 2025 – February 24, 2026

This special exhibition was made possible with support from Corning-Painted Post School District's Special Education Parent Teacher Association (SEPTA).



KIDS ROCKWELL Art Lab

SUPPORTERS

SILVER DOLLAR SOCIETY

Silver Dollar Society Patron (\$10,000+)

James B. Flaws and Marcia D. Weber

Silver Dollar Society Benefactor (\$5,000-\$9,999)

Charlie and Trudy Craig
E. Marie McKee and Robert Cole
Edward and Carissa Schlesinger

Silver Dollar Society Sponsor (\$2,500-\$4,999)

Alan and Lynnette Eusden
Kim Frock and Wendell Weeks
Melissa Gambol
David and Marianne Lubin
Jordan Rankin and Sandra Zuraski
Thomas Snow and Karen Meriwether
Charles W. and Kristin A. Swain
John and Sue Tobin
Lydia Kenton Walsh and Robert Walsh

Silver Dollar Society Member (\$1,100-\$2,499)

Thérèse Arliguie and Xavier Lafosse
Margot Bliven and Richard Rosenberg
Thomas and Barbara Blumer
Matthew and Maria Brown
Laura Coleman and Tom Halgash
Tymon and Angela Daniels
M. Elizabeth and C. Matthew Dann
Karen Douglas
David and Riki Dowler
Paul and Gail Ebeltoft
Karl and Ginny Ehemann
Maria and Ted Goldwyn
Denise Hauselt
Chris and Darryl Heckle
Kevin and Angela Julien
Nicholas and Megan LaPuma
Anjanette Lecher
Joy Macafee
Rick and Denise Maxa
James Mills and Catherine Kotalik
Maureen Mines and Mark Holman
Sabeen and Imran Mukhtar

Ann H. S. Nicholson
Barry Nicholson
Autumn Pawlowski
Susan Peck
Thomas and Alison Pisano
Jamie L. Post
Tyler Quanbeck and Ellen Van Cleave
W. Stuart and Lucia Schweizer
Emily Simon
Russell and Eiron Smith
Dick and Judy Sphon
Mary Spurrier
Camille Torres
Mary and Tony Tripeny
Arie J. and Clare C. van den Blink
Doug and Tami Willard
Karol and Steven Wight
Toby Wollin and Darryl M. Wood

MEMBERS

Sustainer (\$500+)

Maarit Clay
Charles and Sue Milazzo
Patricia Pinkston and Martine Gutierrez

Donor (\$250)

Anonymous
Bill and Sue Boland
Ann Brouse
Alisa Brown
Jim and Karen Chamberlain
Timothy Frawley
Joshua Goldman and Nicole Walker
Marcus and Charlotte Kantz
Ellen and Carlo Kosik Williams
Jean Krebs
Rebekah Macfie and Raphael Byrne
Rhonda Morton
Kate Paterson and Patrick Tepesch
David and Linda Ralph
Vicie Rolling
Ande Rooney
John Ulrich and Lynn Pifer
Lou and Peg Vogel
Vincent and Mary Lee Welch

Family (\$150+)

Anonymous
Kathleen Barry and Family

Rebecca and Michael Bellora
Richard and Alexandra Berg
Phyllis Bishop and Jon Knight
Bruce F. Blackburn
Anthony and Mary Pat Ciccariello
Erin M. Coe and Douglas Cramer
Anna and Thomas Czarples
Jessica and Matthew Edmister
Glori Gillingham and Family
Nick and Anne Harper
Joseph Homa and Jennifer O'Hara
Meagan and Tim Jackson
Kyra Jacobson-Evans and Renee Jacobson
James and Virginia Kennedy
Andrew Knapp and Jenny Wittmaack
Charlene Macko
Kate Milazzo and Pat Lally
Ron and Chris Panosian
Andrea QasGuargis
Dave and Molly Rochelle
Alexandra Ruggiero and David Baum
Brian Michael Lione and Hillori Schenker
Nick and Tammy Schoonover
Brad and Taryn Sick
Brook and Maureen Smith
The Smith Family
Margaret and Ross Stewart
Pamela and Stephen Strollo
Jeniffer and Stephen Taylor
Peter and Wendy Winnett

Dual (\$100+)

Anonymous (4)
Edmund J. Adamus Jr. and Mary Sgarlata Adamus
Tina Albright-Menna
Janiene Altilio
Gigi Alvaré and Mavin Ambrose
Michael and Ellen Amoruso
Rick Anderson and Elsie Howard
Dixon Arnett and Wende Chan-Arnett
Laura and David Austin
Robert Avvampato and Michael Magliocca
Mary A. Bacchus
Linda Baxter and Brenda Carlyle
Mary Jo and Rick Beshore
Michael Beykirch and Elke Meyer

Gayle and Van Bicknell
Michael and Jessica Birbeck
Meredith and Frank Bocek
Dewey and Kathy Booth
Dennis Brown and Mary Ellen Lagana
Michael Buckley and Mason Barnett
Linda and Joel Buice
Ann Cain Crusade and Fred Crusade
Gary Calderone and Lucille Cardinale
Shyam and Julie Chatlani
Sumblina Chaudhary
Dale and Melanie Clark
Catherine and Jeffery Clark
Timothy and Judy Coleman
Peigi Cook and Stephen Thomas
David and Debra Crosby
Amelia Fais Harnas Cueva and Paul Cueva
Patricia Cunningham
Patricia Dann
Lynn Decher
Walter and Priscilla Deichmann
Claudia Dick
Michael Dickey and Peggy Bowen
Larry and Maddy Dolkart
Nancy and Timothy Doutt
Zoe Fabian and Garrett Bochicchio
Jennifer Fais and Noel Sylvester
Mike and Paige Farrell
Dan and Carole Fimlaid
Josh and Tracey Fox
Mary and Edward Franklin
Jane Garnett
Judith and Bruce Graf
Nora Graner-White and Simone White
Rita Griffin-Shroyer
Richard and Rhonda Grzybowski
Janet Hallahan
John Helfinstine
Donna and Jon Homuth
Susan and Reid Hoskins
Phil and Cathy Hubbard
Beth Hylen and Brad Turner
Sarah and Sally Jacoby Murphy
JW Johnston and Sharon Ball
Linda Jolly
Cheryl A. Jordan
Deborah and Michael Joseph
Christy Kager and Steve Webb
Colleen Kaminski and Stephen

Czank
Armand and Gloria Katz
Sylvia Kete
James T. Kirk Jr.
Kirk and Cynthia Klingensmith
Jeanne Kotula and Michael Blatt
Linda Kraus and Mark Davis
Patricia Krizan and Jeff Rinde
Lynda and Richard Kwitek
Anne and Greg Lamb
Beth and Mark Landin
Marcelle T. Lawas and Peter W. May
Sean Lukasik
John Lynch and Melissa Joseph
John and Karen Madison
Nancy Magrath
Edward A. Mainzer and Kevin Chou
Todd Martin
William and Teresa McCahill
Amy McHugh and Matthew Rivlin
Lois McNaughton and Michael McNaughton
James Mead
Vickie Mike
Charlie Mitchell and Bridget Sharry
Cheryl A. Moore and Hans-Erik Aronson
Kevin and Alice Murphy
Melissa and Richard Murray
Robert Myers
Stirling Newberry and MiJeong Kim
Lee and Joe O'Connell
Mary Helen and Francis Olmstead
Nancy and Robert O'Loughlin
Mairead O'Sullivan
Meghan O'Toole and Curt Simmons
Jiachuan Pan and Qin Li
Rise Peacock and James Hansen
Ronald and Vivian Peters
Frank and Leslie Potter
Cindy Pugh-Williams and Joseph L. Williams
Kristina Rainey
Ann and Bob Recotta
John and Eileen Reib
Reiko Rexilius and Jie Li
Georgia A. Reynolds
Alexis and Jon Rittenberger
Andrew and Karen Rochester
Sandra Rockwell Herron and Christine Rockwell Chow
Susan Rodio and Robert Boxer
Shawn Ropars and Elizabeth

Gordon
Constance Sargent
Tom Schill and Joann Kowalski
Paul and Pam Schmitt
Bonifer and Les Schweizer
Richard and Ashley Sharum
David and Patricia Silvernail
John Sirianni and Melissa Colacino
John and Bonnie Sirianni
William and Kristin Smith
Brett and Hannah Smith
Richard and Brenda Snyder
David and Pamela Sonnefeld
Julie Waltz-Stalker and Jonathan Stalker
Gary and Carla Strong
Gil and Harriet Sweet
Faith and Mike Tarby
Adam Teicholz and Andrew Bruck
Izabela and Siavash Yazdanfar
Leo and Judy Thomas
Paul and Natalie Thonis
Julie and Tom Thurber
August and Marie Titi
Daniel and Jill Turner
Martin and Linda van der Grinten
Bryn Van Horne and Shauna McCaig
John and Bridget van Otterloo
Jon and Juliet Varnedoe
Frank and Barbara Vassallo
Bob and Sherry Volk
Scott and Cathy Vonderheide
Pam and Bob Walker
Margaret Walker and Sean Bennett
Jane Walker
Chris and Anne Walters
Vicky Wang and Carmen Giunta
Celeste and William Watman
Matthew and Susan Weibel
Lisa Wemett and Terry Mulee
West End Gallery
Geoffrey and Rita Wittig
Roy and Benda Yarnell

Individual (\$70+)

Anonymous
Talima Aaron
Christine Adamo
Marcia Adamo
Wendy Amin
Dan Antonioli
Betty Bennett
Mary Anne Bly

SUPPORTERS

Susan Bocek Susan Bocek Karen Brugge
 Amy Bush
 Michael and Karen Callahan
 Ann Campbell
 Kimberly Canale
 Warren Cole
 Colleen Coro
 Ernest Danforth
 Samantha Davenport
 Pamela Farr
 Barbara Friedman
 Dori Fulk
 Katherine Fultz and Doc Billingsley
 Judy Garrett
 Lee Gernert-Larrea
 Sarah Gerow
 Janice T. Glover
 Clare Gunther
 Bridget Heckman
 Geoffrey S. Heywood

Patricia A. Jackson
 Jack C. James
 Seth Kehr
 Margaret Kish
 Peggy Koontz
 Lynne Mason
 Gillian and Gayle McGannon
 Daniel McMullin
 Katherine Miller
 Carol Ann Mitchell
 Delaney Moag
 Patrick Monahan
 Judith O'Connell
 Ava Oyer
 Mary Passage
 Christopher Payne
 Judith Prentice
 Sheila Reed
 Amy Jo Reitter
 Louise Richardson
 Theresa Rossette

Adam Setzer
 Lauren Shaw
 Katie Sirrine
 Emily E. Smith
 Marilyn Sullivan
 Dorothy Thomas
 Alice Thompson
 Sarah Tronkowski
 Kyle VanDusen
 Katherine Wadsworth
 Stacy Ward
 Lois Welk
 Dorothy Wenzel

Organization

Cuba Circulating Library
 David A. Howe Public Library
 Elkland Area Community Library
 Hornell Public Library
 Southeast Steuben County Library



GRANTS + DONATIONS

CONTRIBUTORS

Thank you to the following individuals who designated their gifts for annual appeal and general support at \$100 and above:

Anonymous
 Wendy and Jaymin Amin
 Gail and Elijah Baity
 Alisa Brown
 Ruth Bruning
 Jeanne and Tom Cavuoti
 Erin M. Coe and Douglas Cramer
 Russell and Judy Cranston in memory of Bob Rockwell
 Tymon and Angela Daniels
 Liza Donnelly
 Paul and Gail Ebeltoft
 Ann and Donald Egan
 Alan and Lynnette Eusden
 James B. Flaws and Marcia D. Weber
 Linda Fields
 Joshua Goldman and Nicole Walker
 Ann and David Grossman
 Linda Jolly
 Nancy Kelley in memory of Eric Kelley
 James C. Kieffer
 Pam and Joe Lally
 Maureen Mines and Mark Holman
 Mary Passage
 Catherine Price
 Dave and Molly Rochelle
 Tom Schill and Joann Kowalski in honor of Erin M. Coe
 Mary Spurrier

Charles and Kristin Swain
 Andrew Thompson in memory of Cornelia Dana Mead
 Erica and Ron Verkleeren
 Vincent and Mary Lee Welch
 Ristiina Wigg

SPONSORS AND FOUNDATIONS

The Rockwell Museum's programs are made possible by the New York State Council on the Arts with support from the office of the Governor and the New York State Legislature.

Museum Support for Accessibility and Innovation
 Mary Spurrier

Free Admission Days

Williams Toyota
 Wegmans
 CVETS Corning Veterans Engaged to Support

KIDS ROCKWELL Art Lab Sustaining Support

Ken and Janice Freeman

KIDS ROCKWELL Art Lab and Family Programming

Siemens Energy
 Chemung Canal Trust Company
 PINOVA Wealth

Color Play

Toby Wollin and Darryl M. Wood
 Melissa Gambol

Gingerbread Invitational

LeChase Construction

Lecture Series and TRL! Music on the Terrace

CCU Wealth Strategies

Alley Art Project

Mary Spurrier
 The Triangle Fund
 The Swindells Family Fund
 Community Foundation of Elmira-Corning and the Finger Lakes
 Connors Mercantile
 First Heritage Federal Credit Union
 Guthrie
 Members of The Rockwell Museum Board of Trustees and the Executive Director

Education Programming

Art Bridges
 Community Foundation of Elmira-Corning and the Finger Lakes
 The Triangle Fund
 The Tripp Foundation
 Tioga Downs Regional Community Foundation
 Edith Saxton Fund for Steuben County Youth Services
 The Anderson Foundation
 The Hilliard Foundation

Very special thanks to Corning Incorporated Community Impact for matching employee contributions.



STAFF + BOARD + VOLUNTEERS

Staff

Erin M. Coe
Executive Director

Katherine Banerjee
Associate Curator

Kristen Bocek-Kahn
Operations Manager

Lukas Brown
*Retail and Guest Services
Assistant Manager*

Paul Dressen
*Preparator and Design
Exhibition Coordinator*

Katherine Fultz
*Educator for Early
Childhood and Family
Programs*

Lisa Gill
*Director of Finance and
Operations*

Sherry Kirk
*Executive Assistant and
Financial Manager*

Amanda Lett
*Curator of Collections and
Exhibitions*

Katharine Mead
Director of Development

Mary Mix
Director of Education

Ann Recotta
*Education and Volunteer
Programs Coordinator*

Rita Reed
*Retail and Guest Services
Manager*

Amy Ruza
*Educator for Visitor
Engagement and Public
Programs*

Candy Sankey
Assistant Preparator

Emily Smith
Registrar

Jess Spady
*Communications and
Digital Media Manager*

Janelle Steiner
*Programs and Events
Manager*

Willa Vogel
*Director of Marketing and
Communications*

Guest Services

Megan Walsh
Nancy Magrath
Katherine Reilly
Felicia Lash
Syliva Kete
Emily Stein
Abigail Roberts
Thea Zwier

Security

Denise Sarro
Matthew Vine

Volunteers

Jan Altilio
Linda Baxter
Julie Biviano
Pat Ciccariello
Nancy Doutt
Kathi Dwyer
Mary Franklin
Clare Gunther
Roberta Hirliman
Demi Jefferies
Jacqueline Knitter
Pam Lally
Judy O'Connell

Nancy O'Loughlin
Pam Schmitt
Diane Sempler
Bev Stevens
Judy Thomas
Scott Vonderheide
Alex Whydell
Lorraine Williams

Board of Trustees | Officers

Joy Macafee
President

Tyler Quanbeck
Vice President

Autumn M. Pawlowski
Treasurer

Sandra Zuraski
Assistant Treasurer

Camille Torres
Secretary

Board of Trustees | Trustees

Colleen Caravati
Maarit Clay
Laura Coleman
Melissa Gambol, *Past President*
Maria Goldwyn
Nicholas LaPuma
Anjanette Lecher
Barry Nicholson
Tom Pisano
Jamie Post
Morgan Shibel
Emily Simon
John M. Tobin

Image: Edgar Heap of Birds, *Native
Hosts for New York, 2025*, metal sign
panel with mylar text, 36 x 18 in.
Museum Purchase with funds from
the Robert and Hertha Rockwell
Deaccession Fund. 2025.6





111 Cedar Street
Corning, New York 14830

607-937-5386
info@RockwellMuseum.org
RockwellMuseum.org

@RockwellMuseum

