

2024 ANNUAL REPORT



THE
ROCKWELL
MUSEUM
SMITHSONIAN AFFILIATE

ROCKWELL
MUSEUM

CREATING connections

In 2024, The Rockwell Museum explored what happens when pieces and parts come together. A single brush stroke, a lone stitch, or a solitary shape may not mean much on their own, but when combined, they create a work of art.

Bringing these works of art together can reveal new relationships across time, place, and theme. Art has the power to connect us to our feelings, to people we may know, and even to people we have never met. When we come together, what can happen for the greater good? In this annual report, you will discover the surprising connections the Museum made through its collection, exhibitions, and programming in 2024.





TABLE OF CONTENTS

From the Executive Director	5
The Rockwell Commitment	7
Rockwell Stats	9
Rockwell Wrapped: A Look Back at 2024	11
Public Events Calendar	19
Exhibitions + Loans	21
Acquisitions	23
Student Exhibitions	27
Supporters	29
Grants + Donations	31
Staff + Board + Volunteers	33

FROM THE EXECUTIVE DIRECTOR

Dear Friends, Supporters, and Community Members,

Last year was a testament to the essential work of The Rockwell Museum and the vital role it plays in Corning and the greater Southern Tier region. In 2024, we embraced the theme *Creating Connections*—and The Rockwell rose to the challenge, delivering an array of meaningful and memorable connections between art, artists, and audiences of all ages.

Indeed, it is The Rockwell’s strong and longstanding connection to the community, both locally and nationally, that first drew me to seek this leadership role. Though I was not yet serving as Executive Director, I vividly remember visiting the Museum last summer to view *William Wegman: Experimentation and Representation*. As a longtime admirer of Wegman’s work, I was impressed by the premise of the exhibition that focused on the artist’s experimental collaboration with his Weimaraner muses. Like the glowing installation *Brilliant Cut Sky* by 2024 Antigravity artist Rachel Hayes that greeted visitors in the Museum’s rotunda, The Rockwell upends expectations. It is the element of surprise, innovation, and bold storytelling that has come to define The Rockwell Museum.



While visiting, I was also struck by the vibrant display of contemporary works on our third floor—particularly Devan Shimoyama’s large-scale, dazzling piece, *Le Mat*. Another highlight of my visit was participating in the Museum’s newly refreshed *Artists as Activists* tour, a program that encourages critical conversations around art and social change, demonstrating the Museum’s commitment to serving as a platform for relevant and timely dialogue.

The Rockwell’s formal affiliation with the Smithsonian Institution further deepened my admiration. In 2024, we continued to leverage this prestigious partnership by hosting Smithsonian speakers, offering affiliated internships, and proudly serving as one of only four affiliates nationwide participating in the Smithsonian Youth Leadership Team initiative—a program that empowers young people through arts and museum education.

Among our many outstanding exhibitions in 2024, *Stephen Towns’ Private Paradise: A Figurative Exploration of Black Rest and Recreation* holds a special place for me. This poignant and powerful exhibition explored Black rest, recreation, and joy, centering narratives historically excluded from mainstream American history and art and left a lasting impression on me as a candidate for the Executive Director role. The exhibition not only set new attendance records and received national media attention—including recognition by *Hyperallergic* as one of the “must-see exhibitions” in Upstate New York—but also reinforced The Rockwell’s visible commitment to celebrating the diversity of the American experience.

The Rockwell has also been at the forefront of collecting Towns’ work. In 2023, we acquired *Hair Lessons* from his *Declaration & Resistance* series, along with the print *I Am the Glory*. Earlier this year we added a third significant work: the quilted masterpiece *A Taste of Lemonade*. Rich in vibrant colors and flowing lines, it is a bold celebration of self-empowerment, freedom, and joy, serving as the genesis for Towns’ larger quilted works on view in the exhibition.

What truly stands out about The Rockwell is its deep roots in the Corning community. Often described as a “hyper-local” institution, the Museum thrives through the tireless work of our dedicated staff, inventive programming, and creative outreach initiatives. Our partnerships, events, and educational programs reflect a museum that is not just in the community, but part of it.

Throughout this annual report, you will read more about our exhibitions, educational initiatives, acquisitions, community collaborations, and the many ways we created connections in 2024. As we look back on the year, I hope you find something that you personally connected with at The Rockwell Museum.

Now, six months into 2025, we are excited to unveil new exhibitions, deepen community engagement, and further enhance accessibility and digital innovation. We are committed to remaining a vibrant, welcoming space where art, ideas, and people come together.

Thanks to your unwavering support, your passion for art, and your belief in the Museum’s mission, we continue to build an institution that inspires audiences today and for generations to come. On behalf of The Rockwell Board of Trustees, staff and volunteers, thank you for being part of our story.

Erin M. Coe

THE ROCKWELL COMMITMENT

At The Rockwell Museum, our mission, vision, values, and JEDAI pillars guide every aspect of our work—from exhibitions and programs to community partnerships and internal culture. Together, they reflect our deep commitment to fostering curiosity, inclusion, and meaningful engagement with American art. These principles help ensure that the Museum remains a welcoming, dynamic, and evolving space for all.

The following outlines the foundational commitments that shape our past, present, and future. As you read through this annual report, we hope you will note the ongoing commitment to all of the guiding principles outlined here.

MISSION

Through compelling exhibitions and imaginative programs, The Rockwell Museum provokes curiosity, engagement and reflection about art and the American experience.

VISION

The Rockwell Museum will build on its past successes to push the limits of the museum experience and multiply the ways in which art can inspire visitors.

VALUES

As a twenty-first century museum, The Rockwell Museum adheres to the norms of good governance including transparency, ethical stewardship, professionalism, and accountability to our community and stakeholders. The values that express our beliefs and guide our work are:



People

The Rockwell centers the individual in its experiences, exhibitions, programming, meetings, and engagements as our visitors, team members, volunteers, board and community are essential to everything we do.



Progress

The Rockwell employs its resources, position and programming as a force for good to improve mutual understanding, heighten empathy in our society, encourage a supportive environment and nurture connections between people.



Collaboration

The Rockwell embraces intentional and holistic collaborations and partnerships that strengthen the work of the Museum, enhance experiences and expand the possibilities of a museum focused on social impact.



Experimentation

The Rockwell believes in the power of experimentation, its successes and failures, to further the vision of the organization and deepen the connection to its programs, exhibitions, events and interpretation.



Zest

The Rockwell appreciates playful and unexpected approaches to language, design, interpretation, communications and organization which refresh, revitalize and enrich the museum experience.

JEDAI PILLARS

The Rockwell JEDAI pillars aim to guide The Rockwell Museum with courage and transparency to be a welcoming and inclusive place for all people by providing ongoing education, direction, implementation, and evaluation relevant to Justice, Equity, Diversity, Accessibility, and Inclusion. Each JEDAI Pillar is intended to organize the Museum’s priorities, successes, experiments, and goals.

Pillar 1: Art & Programs



The Rockwell Museum is gradually and consistently acquiring new works to diversify its permanent collection. Traveling exhibitions, loans, and programming are selected to immediately impact the diverse stories we tell at the Museum. Partnerships with individual artists and national organizations boost the Museum’s efforts and expand our network to make lasting impact.

Focus Areas

- Collection diversification and decolonization
- Diverse exhibitions
- Events and programs

Pillar 2: Space & Place



The Museum is committed to continuous improvement of its spaces, accommodations, messages and hospitality offerings from a JEDAI lens. This extends beyond the walls through digital platforms and communications. We strive for consistent representation of the Museum’s welcoming stance before, during and after an encounter, from marketing materials to planning and experiencing a visit.

Focus Areas

- Accessibility in physical spaces
- Communications and media planning

Pillar 3: Community Engagement



JEDAI principles spark new and exciting collaborations, with accessibility and diversity at the forefront. Partnerships with local schools, educators, non-profit organizations, and experts push The Rockwell to be responsive to community needs.

Focus Areas

- Responsive Education Initiatives
- Partnerships with Cultural Organizations

Pillar 4: Organizational Culture



The Rockwell Museum creates goals focusing on justice, equity, diversity, accessibility, and inclusion within its Strategic Plan, with support by the Board of Trustees. JEDAI qualities and priorities are now listed in every job description and performance review document.

Focus Areas

- Hiring Practices
- JEDAI Interdepartmental Team

Pillar 5: Resources



With its interdepartmental team structure and bottom-up budget processes, the Museum aims to flatten its hierarchy and promote leadership in decision-making at every level. Team members from all departments and levels weigh in on budget needs, program prioritization and collection interpretation.

Focus Areas

- Annual Budget
- JEDAI Training for Staff & Stakeholders





34,823
MUSEUM
VISITORS

5,197
ART LAB
VISITORS



MUSEUMS
FOR ALL
AND LIBRARY
PASSES
BROUGHT

248
VISITORS

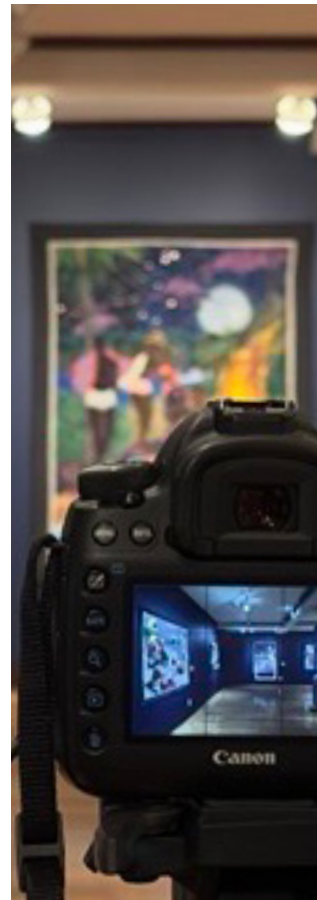


8
SPECIAL
EXHIBITIONS

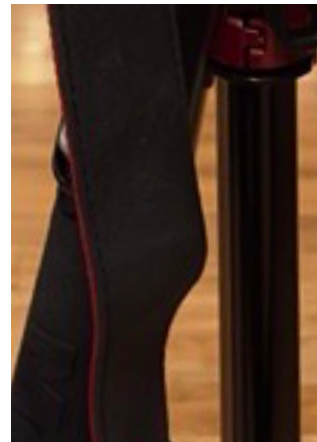
8
STUDENT
EXHIBITIONS



55
ACQUISITIONS



636,118
DIGITAL
ENGAGEMENTS



22
VOLUNTEERS
SERVED

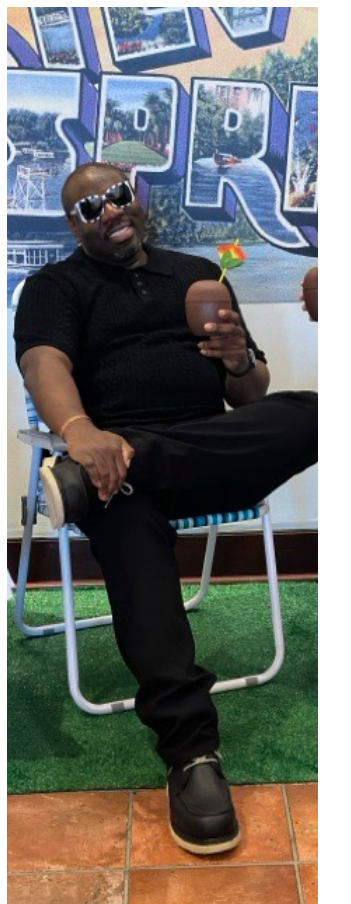
10,594
STUDENTS
SERVED



420
GUESTS
CELEBRATED
BIRTHDAYS
AT KIDS
ROCKWELL
ART LAB



A LOT
OF FUN
WAS HAD



ROCKWELL WRAPPED: A LOOK BACK AT 2024

In 2024, the Museum's annual theme was *Creating Connections*; we explored what happens when pieces and parts come together. A single brush stroke on a canvas, a lone stitch in a textile, or a solitary paper shape may not mean much on their own. But when an artist makes connections, they create a work of art. When we come together, what connections can be made for the greater good?

As we reflect on 2024, we celebrate both the planned and serendipitous connections that shaped our work.



ACCESSIBILITY & INCLUSION INITIATIVES

Following a comprehensive accessibility audit in March, The Rockwell implemented a range of improvements to better serve all visitors. New offerings include: EnChroma glasses for colorblind guests, sensory kits for young visitors, expanded accessibility signage, additional seating, and stroller/wheelchair availability.

Behind the scenes, we also made critical infrastructure upgrades, such as high-contrast signage and stronger public WiFi to support accessibility apps. Looking ahead, we are actively planning for larger initiatives including an all-gender family restroom and other inclusive upgrades—thanks, in part, to support from donors such as Mary Spurrier.

Image: Detail, Martine Gutierrez (born 1989), *Demons, Xochipilli 'The Flower Prince'* (page 91 from *Indigenous Woman Magazine*), 2018, c-print mounted on Sintra. 39 × 27 in., Clara S. Peck Fund, 2019.7.1a-b. Edited to show artwork with and without EnChroma glasses.



A TIME OF TRANSITION

In early 2024, Executive Director Brian Lee Whisenhunt departed for the Gilcrease Museum in Tulsa, Oklahoma. Lisa Gill, Director of Finance and Operations, assumed the role of Interim Director, providing steady leadership as a national search commenced.

To maintain momentum and morale during the transition, the Museum launched *Connections Through Transition*, a series of internal art workshops led by staff. These moments of shared creativity strengthened our team culture and ensured a smooth leadership hand-off. We were thrilled to be able to announce toward the end of the year that Erin M. Coe would be joining The Rockwell beginning January 2025.



INAUGURAL JEDAI DAY

In February, The Rockwell closed to the public for its first-ever JEDAI Day (Justice, Equity, Diversity, Accessibility, and Inclusion). All staff engaged in workshops focused on decolonizing museum practices and increasing equity in interpretation.

The day included a museum-wide accessibility audit and a powerful presentation by Herb Alexander, Chief Diversity Officer at Cayuga Health System, on identifying and addressing implicit bias. We are committed to making this an annual opportunity for reflection, growth, and collaboration.





A YEAR OF STEPHEN TOWNS

Following the 2022 acquisition of two works by Stephen Towns, The Rockwell showcased a new solo exhibition: *Private Paradise: A Figurative Exploration of Black Rest and Recreation*. Towns spoke in our spring lecture series, and collaborated closely with our exhibition design team throughout the year. The exhibition, which examines Paradise Park—a segregated mid-century Florida attraction—invites viewers to reflect on Black joy and rest within constrained spaces.

The exhibition opened in September to overwhelming praise and was highlighted by *Hyperallergic* as one of the “Top 10 Exhibitions in New York State.” We are thrilled to announce the Museum’s acquisition of *A Taste of Lemonade*, a central quilted work from the exhibition.

Above image: Detail, Stephen Towns (born 1980), *A Taste of Lemonade*, 2024, natural and synthetic fabric, polyester and cotton thread, crystal glass beads, metal and resin buttons. 57” x 49.5” in. Courtesy of the artist; Left page, top right image: Detail, Stephen Towns (born 1980), *Taking Flight*, 2022, acrylic oil metal leaf on panel, 40” x 40” in. Courtesy of the artist.





SHANNAH WARWICK ART LAB TAKEOVER

Artist Shannah Warwick transformed the KIDS ROCKWELL Art Lab into the *Curious Apothecary*, a family-friendly installation exploring the synergy of magic, creativity, and nature. Incorporating elements of botany, artificial intelligence, and sensory play, the exhibition invited young visitors to engage their imaginations.

Rockwell Ambassadors also had the unique opportunity to participate in a felting workshop with the artist in August, creating their own “Guardians of Creativity.”

This exhibition was made possible with support by Mary Spurrier.



LEVERAGING NATIONAL PARTNERSHIPS

Through our continued Smithsonian Affiliation, The Rockwell welcomed Smithsonian experts Noriko Sanefuji and Dr. Richard Kurin for our *Creating Connections* Lecture Series. We also hosted two interns through the Smithsonian’s Digital Learning and Engagement program and were honored to be one of just four Affiliates nationwide participating in the Smithsonian Youth Leadership Team.

Through our Art Bridges partnership, we presented a conceptual loan from artist Felix Gonzalez-Torres, and used engagement grant funding to host youth tours, expand our *Artists as Activists* audio tour and Pride Guide, and partner with GATLAS (Gay at the Library After School) on a summer exhibition and reception.



INNOVATIVE PROGRAMMING

In 2024, The Rockwell staff continued to develop inventive public programming. A standout collaboration with SoFLX Pride resulted in *Comings & Goings*, a dynamic gallery experience featuring four performance artists exploring queer identity in celebration of National Coming Out Day.

Family programming also expanded in bold new directions. Highlights included *Papagayo Puppet Opera* (a partnership with Tri Cities Opera) and a high-energy concert by *Rolie Polie Guacamole* in the *Visions of America* gallery. Rockwell also had a presence at numerous community events, including Juneteenth in Elmira, and the Corning Pride Festival.



A GROWING COLLECTION

The Rockwell’s permanent collection continues to evolve and diversify. In August, Rockwell Ambassadors selected *Pretendian* by Hayden Haynes, a poignant and humorous exploration of identity. Other significant acquisitions include:

- *Din avec la main dans le miroir et jupe rouge* by Mickalene Thomas
- *Lone Ranger and Tonto with Buffalo Bill and Sitting Bull* by Sarah Sense
- *Luminous Fissuers* by Shahzia Sikander (purchased with funds from the Bob and Hertha Rockwell Deaccession Fund)
- *Yellow Prairie Grass* by Teresa Baker
- *¿La Vida, quien entiende estas cosas?* by Tiffany Alfonseca.

In total, The Rockwell acquired 24 works by 14 artists in 2024. Of these, 83% represent diverse perspectives, including seven works by women, eight by BIPOC artists, and four by LGBTQIA2S artists. See the full list of 2024 acquisitions on page 19.

Image: Michalene Thomas (born 1971), *Din avec la main dans le miroir et jupe rouge*, 2024, hand-collaged silkscreen and archival print with embossment and glitter on Hahnemüle paper. 18 x 22 in., Museum Purchase with the Bob and Hertha Rockwell Deaccession Fund with the Bob and Hertha Rockwell Deaccession Fund. 2024.4.



DOG DAYS OF SUMMER WITH WILLIAM WEGMAN

Collaborating with the renowned photographer William Wegman was a highlight of the year. The exhibition *Experimentation & Representation* was presented in partnership with the Arnot Art Museum. At the Arnot, visitors explored Wegman's depictions of his favorite models in costume. The Rockwell Museum featured abstract photographs, experimental collaborations in which the dogs become the work of art. A cross-institutional Art Hunt encouraged visitors to engage with both exhibitions, offering a collectible puppy plush as an incentive.

Members enjoyed a special opportunity to meet William Wegman and his canine muse, Flo, at a sold-out Member Appreciation Event in May. The exhibition ran from May 24 to September 3, and we are proud to have added two Wegman works to our permanent collection in commemoration.

Many thanks to Elise Johnson-Schmidt and family for making this exhibition possible.



PUBLIC EVENTS CALENDAR

January 4
Lil Rockwell | Toddler Art Making: Creating Connections

January 15
Dr. Martin Luther King Jr. Day | Free Admission

January 15
Martin Luther King, Jr. Day | Making Real the Dream: Decorate a Hand Drum

January 18
Members-Only | Art History Club Meet-Up & Reception

January 25
Creating Connections Lecture Series | Too Handsome For Use: Bank Note Vignettes in the Antebellum Era with Dr. Amanda Lett

February 1
Lil Rockwell | Story Hour: Friendship

February 9
TRL! Concert in the Gallery featuring Mike & Ruthy

February 24
Family Day | Papagayo Puppet Opera

February 29
Creating Connections Lecture Series | Power of Artifacts of Incarceration: Japanese American Experience with Noriko Sanefuji

March 7
Lil Rockwell | Toddler Art Making: Color, Shapes & Patterns

March 21
Creating Connections Lecture Series | Saving Culture in Crisis Today with Dr. Richard Kurin

March 28
Rockwell Ambassador-Only | Antigravity: Rachel Hayes

April 4
Lil Rockwell | Story Hour: Solar Cycles

April 5
TRL! Concert in the Gallery featuring Palmyra

April 6
Family Day | Rolie Polie Guacamole Band

April 18
Creating Connections Lecture Series | Art Inspired by Uncovered Histories with Stephen Towns

May 2
Lil Rockwell | Stroller Walk: Brilliant Cut Sky

May 15
Alley Art Project | Student Exhibition Opening Reception & Mural Design Unveiling

May 29
Member Appreciation Event Featuring Artist William Wegman

May 24 - 26
GlassFest: Free Art Lab Admission for All Ages

June 1 - 30
Celebrate Pride with The Rockwell

June 6
Lil Rockwell | Story Time: PRIDE

June 7
Gallery Night & Exhibition Opening: The Curious Apothecary by Shannah Warwick

June 8
SoFLX Pride Festival | Rainbow Mash-Up Printing

June 12
TRL! Music on the Terrace featuring Maddy Walsh Trio

June 15
Elmira Juneteenth Celebration

June 22
Make Music Day | Music Lab

July 2
Summer Explorers | Printed and Collaged Tote Bags

July 9
Summer Explorers | Printed and Collaged Tote Bags

July 10
TRL! Music on the Terrace featuring NEO Project

July 11
Lil Rockwell | Stroller Walk: The Curious Apothecary

July 16
Summer Explorers | Felting with Rainbow Fibers

July 23
Summer Explorers | Felting with Rainbow Fibers

July 30
Summer Explorers | Marble Painted Masterpieces

August 1
Lil Rockwell | Toddler Art-Making: Fantastical Flowers

August 6
Summer Explorers | Marble Painted Masterpieces

August 13
Summer Explorers | Put a Dog on It: Mailable Postcard Weimaraner Collages

August 14
TRL! Music on the Terrace featuring Ariel Arbisser

August 20
Summer Explorers | Put a Dog on It: Mailable Postcard Weimaraner Collages

August 22
Rockwell Ambassador-Only Summer Party featuring Artist Shannah Warwick

September 12
High School Learning Center: Identity and the Artist Performance

September 20
Gallery Talk with Artist Stephen Towns

September 20
Exhibition Opening Reception | Stephen Towns' Private Paradise: A Figurative Exploration of Black Rest and Recreation

September 21
Celebrate The Harvest with The Rockwell

September 26
Silver Dollar Society | Annual Donor Recognition Event

September 27
Alley Art Project: Public Ribbon Cutting and Celebration [1]

October 3
Lil Rockwell | Stroller Walk: Día de los Muertos

October 14
Indigenous Peoples' Day

October 10
COMINGS & GOINGS: A Celebration of National Coming Out Day

October 19
Annual Día de los Muertos Family Celebration

November 1 - 30
Free Admission for Veterans

November 6
Gallery Talk | Nathan Benn's Peculiar Paradise

November 7
Lil Rockwell | Toddler Art: Three Sisters Seed Balls

November 14 - 15
FLXGives

December 1
Museum Store Sunday

December 4
Gingerbread Invitational Opening Reception

December 5
Lil Rockwell | Story Time: Gingerbread

December 7
Holiday Open House

December 7
Family Day | Sparkle

December 10
Accept as You Are: GATLAS Student Exhibition Reception



EXHIBITION CALENDAR

Pieces and Parts: The Diversity of American Collage
February 2 – May 10, 2024

*This exhibition was made possible with support from
Melissa J. Gambol.*

Resilience—A Sansei Sense of Legacy [1]
February 19 – May 5, 2024

*This exhibition was made possible with support from
CCU Wealth Strategies.*

Antigravity: Brilliant Cut Sky by Rachel Hayes
March 28, 2024 – March 16, 2025

**Experimentation and Representation: The
Photography of William Wegman**
May 24 – September 3, 2024

*A joint exhibition with the Arnot Art Museum, Elmira
Sponsored by Elise Johnson-Schmidt and Family.*

Shannah Warwick’s Curious Apothecary
June 7 – September 8, 2024

This exhibition was made possible by Mary Spurrier.

**Stephen Towns’ Private Paradise: A Figurative
Exploration of Black Rest and Recreation [2]**
September 21, 2024 – January 20, 2025

*This exhibition was made possible in part by the CJSS
Skillern Family Art Museum.*

**A Peculiar Paradise: Florida Photography
by Nathan Benn [3]**
September 27, 2024 – January 12, 2025

Gingerbread Invitational: Paradise
November 23 – December 31, 2024

*The 2024 Gingerbread Invitational was made possible
by First Heritage Credit Union and LeChase Construction
Services, LLC.*



FEATURED LOANS

William H. Johnson (1901-1970)
Art Class, c. 1939-1940
Oil on plywood

On Loan from the Smithsonian
American Art Museum, gift of The
Harmon Foundation



Félix González-Torres (1957-1996)
Untitled (L.A.), 1991
Green candies in clear wrappers,
endless supply

On Loan from Art Bridges



ACQUISITIONS

Claes Oldenburg
2024.1.1
Spoon Pier
1975
etching on paper
28 5/16 x 22 5/8 in.
Museum Purchase with the Bob and Hertha Rockwell Deaccession Fund

Luigi Lucioni
2024.1.2
MacDougal Alley
1926
etching on paper
8 1/2 x 15 1/4 in.
Museum Purchase with the Bob and Hertha Rockwell Deaccession Fund

Luigi Lucioni
2024.1.3
Washington Square Arch
1925-1975
etching on paper
4 1/2 x 5 7/16 in.
Museum Purchase with the Bob and Hertha Rockwell Deaccession Fund

Luigi Lucioni
2024.1.4
Four Winds Farm
1925-1975
etching on paper
6 x 6 5/8 in.
Museum Purchase with the Bob and Hertha Rockwell Deaccession Fund

Luigi Lucioni
2024.1.5
Shadows Slanting
1972
etching on paper
6 x 4 in.
Museum Purchase with the Bob and Hertha Rockwell Deaccession Fund

Luigi Lucioni
2024.1.6
Barns and Hills
1973
etching on paper
5 1/4 x 7 in.
Museum Purchase with the Bob and Hertha Rockwell Deaccession Fund

Luigi Lucioni
2024.1.7
Barns and Sky
1965
etching on paper
5 1/4 x 6 1/4 in.
Museum Purchase with the Bob and Hertha Rockwell Deaccession Fund

Luigi Lucioni
2024.1.8
Shadow and Substance
1943
etching on paper
7 3/4 x 10 1/2 in.
Museum Purchase with the Bob and Hertha Rockwell Deaccession Fund

Luigi Lucioni
2024.1.9
Vermont Barn in Landscape
1943
etching on paper
5 x 5 3/4 in.
Museum Purchase with the Bob and Hertha Rockwell Deaccession Fund

Luigi Lucioni
2024.1.10
Vermont Barn in Landscape
1957
etching on paper
3 3/4 x 5 in.
Museum Purchase with the Bob and Hertha Rockwell Deaccession Fund

Tiffany Alfonseca [1]
2024.2
La vida, quien entiende estas cosas? (Life, who understands these things?)
2023
acrylic paint, rhinestones, and colored pencils on stretched canvas
36 x 48 in.
Museum Purchase with the Bob and Hertha Rockwell Deaccession Fund

Teresa Baker
2024.3
Yellow Prairie Grass
2023
acrylic, yarn, willow and buckskin on artificial turf
38 x 75 in.
Museum Purchase with the Bob and Hertha Rockwell Deaccession Fund

Mickalene Thomas
2024.4
Din avec la main dans le miroir et jupe rouge
hand-collaged silkscreen and archival print with embossment and glitter on Hahnemühle paper
20 x 24 in.
Museum Purchase with the Bob and Hertha Rockwell Deaccession Fund

Rachel Hayes
2024.5
(Untitled)
2024
Glass
4 1/2 x 11 1/2 x 9 1/4 in.
Gift of Rachel B. Hayes

Robert Rauschenberg
2024.6a-l
Opal Gospel
1971
color screenprints on transparent acrylic panels
25 1/2 x 24 x 8 in.
Museum Purchase with the Bob and Hertha Rockwell Deaccession Fund

William Wegman
2024.7a-b
Rustic Placement
2007
color polaroid
left panel: 24 x 20 in.
right panel: 24 x 20 in.
Gift of the Artist, in Honor of Elise Johnson-Schmidt and her family

Gerald Geerlings
2024.8
Civic Insomnia
1932
color aquatint on paper
10 3/4 x 14 1/8 in.
Museum Purchase with the Bob and Hertha Rockwell Deaccession Fund

Hayden Haynes
2024.9
Pretendians
2024
Moose and white tail deer antler, marine shell, wood, quartz, red acrylic, black glass, leather dye, stove polish, and enamel paint
5 1/2 x 2 in.
Museum Purchase with the Bob and Hertha Rockwell Deaccession Fund with the Rockwell Ambassadors

William Wegman
2024.10
Dining Out
2023
acrylic, charcoal, pencil, ink, and postcards on panel
48 x 72 in.
Museum Purchase with the Bob and Hertha Rockwell Deaccession Fund

Shazia Sikander
2024.11
Luminous Fissures
2024
cotton blowout with stenciled pulp painting on handmade abaca
39 3/4 x 30 in.
Museum Purchase with the Bob and Hertha Rockwell Deaccession Fund with the Silver Dollar Society

Sarah Sense
2024.12
Lone Ranger and Tonto with Buffalo Bill and Sitting Bull
2018
woven archival inkjet prints on bamboo paper
32 x 48 in.
Museum Purchase with the Bob and Hertha Rockwell Deaccession Fund with Funds Donated by Mary Spurrier

Stephen Towns
2024.13
A Taste of Lemonade
2024
natural and synthetic fabric, polyester and cotton thread, crystal glass beads, metal and resin buttons
57 x 49 1/2 in.
Museum Purchase with the Bob and Hertha Rockwell Deaccession Fund

Elaine K. Ng
2024.14.1a-d
From Maine to Taiwan and back, stopping in Corning for a few minutes
2021
blown glass, sea brick, frayed nylon rope, epoxy resin, handwoven cotton tape, plywood, pine, concrete, cut nails
21 1/2 x 19 1/4 x 9 1/2 in.
Gift of Elaine K. Ng

Elaine K. Ng
2024.14.2a-c
Three Glass Pieces
2021
blown glass
each: 2 1/2 in.
Gift of Elaine K. Ng

Robert von Sternberg
2024.15.1
Valero Service, Tucumcari, New Mexico
2015
archival pigment photograph printed on Carson Infinity Platine paper stock
13 x 19 in.
Gift of the Artist

Robert von Sternberg
2024.15.2
AMF Bowling Lanes, Woodland Hills, California
2015
archival pigment photograph printed on Carson Infinity Platine paper stock
13 x 19 in.
Gift of the Artist

Robert von Sternberg
2024.15.3
Community Center, Bombay Beach, Salton Sea, California
2015
archival pigment photograph printed on Carson Infinity Platine paper stock
13 x 19 in.
Gift of the Artist

Robert von Sternberg
2024.15.4
Dan Blocker Beach, Malibu, California
2015
archival pigment photograph printed on Carson Infinity Platine paper stock
13 x 19 in.
Gift of the Artist

Robert von Sternberg
2024.15.5
Empty Store Front, Memphis, Tennessee
2015
archival pigment photograph printed on Carson Infinity Platine paper stock
13 x 19 in.
Gift of the Artist

Robert von Sternberg
2024.15.6
Fiberglass Strawberry, Chinle, Arizona
2009
archival pigment photograph printed on Carson Infinity Platine paper stock
13 x 19 in.
Gift of the Artist

Robert von Sternberg
2024.15.7
Highway Divider, Zuma Beach, California
2010
archival pigment photograph printed on Carson Infinity Platine paper stock
13 x 19 in.
Gift of the Artist

ACQUISITIONS

Robert von Sternberg
2024.15.8
Motel Sign, Malibu, California
2016
archival pigment photograph printed
on Carson Infinity Platine paper
stock
13 x 19 in.
Gift of the Artist

Robert von Sternberg
2024.15.9
Parked Trailer, Redwood City
2014
archival pigment photograph printed
on Carson Infinity Platine paper
stock
13 x 19 in.
Gift of the Artist

Robert von Sternberg
2024.15.10
*Pathway Cone, Richardson Grove,
Garberville, California*
2019
archival pigment photograph printed
on Carson Infinity Platine paper
stock
13 x 19 in.
Gift of the Artist

Robert von Sternberg
2024.15.11
Red Horse, Bishop, California
2013
archival pigment photograph printed
on Carson Infinity Platine paper
stock
13 x 19 in.
Gift of the Artist

Robert von Sternberg
2024.15.12
*Red House, Malibu Road, Malibu,
California*
2010
archival pigment photograph printed
on Carson Infinity Platine paper
stock
13 x 19 in.
Gift of the Artist

Robert von Sternberg
2024.15.13
*Rockview Trailer Park, Morro Bay,
California*
2013
archival pigment photograph printed
on Carson Infinity Platine paper
stock
13 x 19 in.
Gift of the Artist

Robert von Sternberg
2024.15.14
Seattle Airport, Washington
2011
archival pigment photograph printed
on Carson Infinity Platine paper
stock
13 x 19 in.
Gift of the Artist

Robert von Sternberg
2024.15.15
Sign Board, Route 66, California
2014
archival pigment photograph printed
on Carson Infinity Platine paper
stock
13 x 19 in.
Gift of the Artist

Robert von Sternberg
2024.15.16
*Wedding Chapel, Santa Barbara
Courthouse, California*
2012
archival pigment photograph printed
on Carson Infinity Platine paper
stock
13 x 19 in.
Gift of the Artist

Robert Fichter
2024.16.1
Screamer Mountain (Clouds)
2012; printed 2024
archival pigment photograph printed
on Carson Infinity Platine paper
stock
13 x 19 in.
Gift of Robert von Sternberg in
Memory of Robert Fichter

Robert Fichter
2024.16.2
Wakulla River
2011; printed 2024
archival pigment photograph printed
on Carson Infinity Platine paper
stock
13 x 19 in.
Gift of Robert von Sternberg in
Memory of Robert Fichter

Robert Fichter
2024.16.3
Fall at LES
2011; printed 2024
archival pigment photograph printed
on Carson Infinity Platine paper
stock
13 x 19 in.
Gift of Robert von Sternberg in
Memory of Robert Fichter

Robert Fichter
2024.16.4
DC’s prints on porch
2011; printed 2024
archival pigment photograph printed
on Carson Infinity Platine paper
stock
13 x 19 in.
Gift of Robert von Sternberg in
Memory of Robert Fichter

Robert Fichter
2024.16.4
DC’s prints on porch
2011; printed 2024
archival pigment photograph printed
on Carson Infinity Platine paper
stock
13 x 19 in.
Gift of Robert von Sternberg in
Memory of Robert Fichter

Robert Fichter
2024.16.5
Orange
2011; printed 2024
archival pigment photograph printed
on Carson Infinity Platine paper
stock
13 x 19 in.
Gift of Robert von Sternberg in
Memory of Robert Fichter

Sheila Pinkel
2024.17.1
*Photograph, African Sculpture from
the “Xeroradiographs” Series*
1977-1983
mammogram inkjet print on Epson
Premium Luster Paper
18 3/4 x 14 in.
Gift of Sheila Pinkel

Sheila Pinkel
2024.17.2
*Photograph, Artichoke from the
“Xeroradiographs” Series*
1977-1983
mammogram inkjet print on Epson
Premium Luster Paper
19 x 14 in.
Gift of Sheila Pinkel

Sheila Pinkel
2024.17.3
*Photograph, Hibiscus from the
“Xeroradiographs” Series*
1977-1983
mammogram inkjet print on Epson
Premium Luster Paper
18 5/8 x 14 in.
Gift of Sheila Pinkel

Sheila Pinkel
2024.17.5
*Peas from the “Xeroradiographs”
Series*
1977-1983
mammogram inkjet print on Epson
Premium Luster Paper
18 7/8 x 14 5/16 in.
Gift of Sheila Pinkel

Sheila Pinkel
2024.17.6
*Anthony & Co. Waterbury Lens, Scovill
Mfg. Co. f 16 from the “Lens Scans”
Series*
2011
inkjet print on Epson Premium
Luster Paper
23 7/8 x 23 7/8 in.
Gift of Sheila Pinkel

Sheila Pinkel
2024.17.7
*Stereo Pamos, f 32 from “Lens Scans”
Series*
2011
inkjet print on Epson Premium
Luster Paper
24 x 23 3/4 in.
Gift of Sheila Pinkel

Sheila Pinkel
2024.17.8
*Lerebours Daguerrean Camera, 1848
from the “Lens Scans” Series*
2011
inkjet print on Epson Premium
Luster Paper
24 x 23 3/4 in.
Gift of Sheila Pinkel

Sheila Pinkel
2024.17.9
*Imagon Rodenstock 16”, f 5.8 from the
“Lens Scans” Series*
2011
inkjet print on Epson Premium
Luster Paper
24 x 24 in.
Gift of Sheila Pinkel

Sheila Pinkel
2024.17.10
*Leica Summilux M 75 mm, F 16 from
the “Lens Scans” Series*
2011
inkjet print on Epson Premium
Luster Paper
23 7/8 x 23 7/8 in.
Gift of Sheila Pinkel

Image: Detail, Tiffany Alfonseca (born 1994), *La vida, quien entiende estas cosas? (Life, who understands these things?)*, 2023, acrylic paint, rhinestones, and colored pencils on stretched canvas. 36 x 48 in. Museum Purchase with the Bob and Hertha Rockwell Deaccession Fund. 2024.2



STUDENT EXHIBITION CALENDAR

Color, Shape, & Texture
Unified Art Annual Student Exhibition
December 1, 2023 – February 4, 2024

This exhibition was created with support from Corning-Painted Post School District’s Special Education Parent Teacher Association (SEPTA).

Ignite the Imagination: Corning-Painted Post Elective Art High School Student Exhibition
January 13 – March 17, 2024

Interwoven Expressions: Connecting Through Creativity: The Alternative School for Math and Science Student Exhibition
March 1 – April 28, 2024

International Baccalaureate Visual Arts Student Exhibition, Corning-Painted Post High School
March 30 – May 3, 2024

Alley Art Project: Cosmic Connections High School Learning Center Student Exhibition
May 15 – September 2, 2024

This project was supported in part by the National Endowment for the Arts, The Triangle Fund, and the Community Foundation of Elmira-Corning and the Finger Lakes, Inc.

Día de los Muertos/Day of the Dead Student Exhibition, Regional Middle School Spanish Students
October 1 – November 3, 2024

Accept as You Are: GATLAS Student Exhibition
December 7 – December 31, 2024
In collaboration with Southern Finger Lakes Pride, Southeast Steuben County Library, and Planned Parenthood of Greater New York

Generous support for this project provided by Art Bridges.

Color, Shape, & Texture: Corning-Painted Post Unified Art Student Exhibition
December 7, 2024 – February 23, 2025

Image: [1] Josephine Sauer, *International Baccalaureate Visual Arts Student Exhibition*, Corning-Painted Post High School; [2] Sage Ulrich, *Accept as You Are: GATLAS Student Exhibition*; [3] Jadyn Colegrove, *Interwoven Expressions: Connecting Through Creativity: The Alternative School for Math and Science Student Exhibition*; left page: Mel Peanasky, *International Baccalaureate Student Exhibition*, Corning-Painted Post High School



SUPPORTERS

SILVER DOLLAR SOCIETY

Silver Dollar Society Patron (\$10,000+)

James Flaws and Marcia Weber

Silver Dollar Society Benefactor (\$5,000-\$9,999)

E. Marie McKee and Robert Cole
Edward and Carissa Schlesinger

Silver Dollar Society Sponsor (\$2,500-\$4,999)

Alan and Lynnette Eusden
Kim Frock and Wendell Weeks
Melissa Gambol
David and Marianne Lubin
Jordan Rankin and Sandra Zuraski
Thomas Snow and Karen Meriwether
Charles and Kristin Swain
John and Sue Tobin
Lydia Kenton Walsh and Robert Walsh

Silver Dollar Society Member (\$1,100-\$2,499)

Stefan and Frauke Becker
Margot Bliven and Richard Rosenberg
Thomas and Barbara Blumer
Matthew and Maria Brown
Colleen Caravati-Birdwell and Trey Birdwell
Tymon and Angela Daniels
Matthew and Elizabeth Dann
Walter and Karen Douglas
David and Riki Dowler
Paul and Gail Ebeltoft
Karl and Ginny Ehemann
Ted and Maria Goldwyn
Kirk and Penny Gregg
Denise Hauselt
Chris and Darryl Heckle
Kevin and Angela Julien
Xavier Lafosse and Thérèse Arliguie
Adèle Lanahan
Nicholas and Megan LaPuma
Tom and Andrea Lynch
Joy Macafee
Rick and Denise Maxa
Maureen Mines and Mark Holman
Kim and Brendan Mosher

Barry Nicholson
Ann H. S. Nicholson
Autumn Pawlowski
Thomas and Alison Pisano
Tyler Quanbeck and Ellen Van Cleave
W. Stuart and Lucia Schweizer
Dick and Judy Sphon
Marc Stemerman
Camille Torres
Tony and Mary Tripeny
Arie and Clare van den Blink
Paul VerValin
Karol and Steven Wight
Doug and Tami Willard

MEMBERS

Sustainer (\$500+)

Ann Brouse
Maarit Clay
Jane Garnett
William Groome in honor of Kathryn Anastasio
Harry and Sara Merritt
Charles and Sue Milazzo
Payal Patel and David Ebeltoft
Patricia Pinkston and Martine Gutierrez
Susie Silbert and Jeff Toohig

Donor (\$250)

Anonymous
Alisa Brown
Raphael Byrne and Rebekah Macfie
Jim and Karen Chamberlain
Kathryn and Marwin Cummings
Bruce Irvine
Linda Jolly
Charlotte and Marcus Kantz
Ellen and Carlo Kosik Williams
Jean Krebs
Geoffrey and Susan Lefferts
Rhonda Morton
Rick Pirozzolo
Wendy Popp
Ande Rooney
John Ulrich and Lynn Pifer
Vincent and Mary Lee Welch
West End Gallery
Alan and Maria Winston

Family (\$150+)

Bethany and Sean Barker
Richard and Alexandra Berg
Joseph and Giuliana Calderone
Erin Coe and Douglas Cramer
Henry and Karen Gold
Virginia Hamilton
Nick and Anne Harper
Ryan Hughes and Katherine Larson
Pam and Joe Lally
James Mills and Catherine Kotalik

Dual (\$100+)

Anonymous (8)
Mark Abdalla
Edmund J. Adamus Jr. and Mary Sgarlata Adamus
Gigi Alvare
Michael and Ellen Amoruso
Laura and David Austin
George and Jeanette Babey
Mary A. Bacchus
Kevin Bardelski and Elizabeth Saunders
Linda Baxter and Brenda Carlyle
Mary Jo and Rick Beshore
Gayle and Van Bicknell
Phyllis Bishop and Jon Knight
Jill and Thomas Blagg
Timothy and Tammy Bocek
Meredith and Frank Bocek
Kristen Boscarino and Matthew DellaVecchia
John and Margo Brown
Joan and David Brumberg
Michael Buckley and Mason Barnett
Joel and Linda Buice
Chelsea Burau and Matthew Willcocks
Lauren Nishikawa and Jeremy Burau
Amy Bush
Michael and Karen Callahan
Sumblina Chaudhary
Anthony and Mary Pat Ciccariello
David and Roberta Clark
Catherine and Jeffery Clark
Dale and Melanie Clark
Timothy and Judy Coleman
Peigi Cook and Stephen Thomas
Michaela Cosgrove and Thomas Carey

Amelia and Paul Cueva
Patricia Cunningham
Anna and Thomas Czarples
Deborah and James Danko
Patricia Dann
Lynn Decher
Walter and Priscilla Deichmann
Claudia Dick
Larry and Maddy Dolkart
Richard Edwards and Lynn Ricotta
Anna Eide
Mike and Paige Farrell
Mieke Fay
Dan and Carole Fimlaid
Gary and Janice Fitzpatrick
Josh and Tracey Fox
Mary and Edward Franklin
Timothy Frawley
Kathy Fredrickson
Barbara Friedman
Kevin and Alicia Gallagher
Janette and Dan Gallagher
Karen Gentile
Sarah Gerow
Claire Warren Ginnan and Todd Ginnan
Peter and June Gordon
Anne and Graham Gorst
Judith and Bruce Graf
Richard and Rhonda Grzybowski
Frank and Linda Gudas
Janet Hallahan
Marissa and Greg Harris
John Helfinstine
Joseph Homa and Jennifer O’Hara
Donna and Jon Homuth
Susan and Reid Hoskins
Patricia Houck
Marshall Hyde
Meagan and Tim Jackson
Cheryl Jordan
Christy Kager and Steve Webb
Colleen Kaminski and Stephen Czank
Armand and Gloria Katz
Kamala Keeley
Heather Kennedy
Dr. James T. Kirk, Jr.
Kirk and Cynthia Klingensmith
Andrew Knapp and Jenny Wittmaack
Jeanne Kotula and Michael Blatt
Linda Kraus and Mark Davis

Lynda and Richard Kwitek
Pam and Joe Lally
Anne and Greg Lamb
Beth and Mark Landin
Brian Michael Lione and Hillori Schenker
Anne LoPinto
Sean Lukasik
John Lynch and Melissa Joseph
Anne Lyons and Erik Lundberg
John and Karen Madison
Nancy Magrath
Maia and Shane Mahosky
Edward Mainzer and Kevin Chou
William and Teresa McCahill
Amy McHugh and Matthew Rivlin
Lois McNaughton and Michael McNaughton
Jim and Cornelia Mead
Vickie Mike
Kate Milazzo and Pat Lally
Kevin and Alice Murphy
Melissa and Richard Murray
Krystal Nowosielski and Stonewall Tyler
Thomas C. and Barbara F. O’Brien
Mary Helen and Francis Olmstead
Nancy and Robert O’Loughlin
Ron and Chris Panosian
Patricia Pinkston
Virgilio Pinto and Maria Christabel Pinto
Frank and Leslie Potter
Kristina Rainey
David and Linda Ralph
Antoinette Reed
John and Eileen Reib
Lauren Rider and Family
Alexis and Jon Rittenberger
Dave and Molly Rochelle
Susan Rodio and Robert Boxer
Shawn Ropars and Elizabeth Gordon
Alexandra Ruggiero and David Baum
Constance Sargent
Tom Schill and Joann Kowalski
Paul and Pam Schmitt
Bonniifer and Les Schweizer
Brad and Taryn Sick
David and Patricia Silvernail
Laura Simone
John Sirianni and Melissa Colacino

John and Bonnie Sirianni
William and Kristin Smith
Brett and Hannah Smith
Christopher and Kimberly Stahl
Julie Waltz-Stalker and Jonathan Stalker
Geoffrey and Alexis Steenberge
Gary and Carla Strong
Louise and Connie Sullivan-Blum
Fred and Penny Tanneberger
Faith and Mike Tarby
Adam Teicholz and Andrew Bruck
Izabela and Siavash Yazdanfar
Leo and Judy Thomas
Kim Thompson
Paul and Natalie Thonis
Julie and Tom Thurber
August and Marie Titi
Ken Tsukada and Cindy Putorti
Martin and Linda van der Grinten
John and Bridget van Otterloo
Frank and Barbara Vassallo
Bob and Sherry Volk
Scott and Cathy Vonderheide
Deborah and Craig Walike
Pam and Bob Walker
Jane Walker
Celeste and William Watman
Matthew and Susan Weibel
Lisa Wemett and Terry Mulee
Abbey and Chris Wentzel
Peter and Wendy Winnett
Geoffrey and Rita Wittig
Chris Wolf and Dale Stanley
Sue and Kenneth Wood
Roy and Benda Yarnell
Maryann and Gordon Young

Individual (\$70+)

Christine Adamo
Marcia Adamy
Mary Akins
Deborah Amati
Wendy Amin
Dan Antonioli
Christine Atkins
Betty Bennett
Sarah Blagg
Mary Anne Bly
Susan Bocek
Louise Bush
Ann Campbell
Kimberly Canale

SUPPORTERS

Marie H. Cole
Warren Cole
Ernest Danforth
Erica Darmstadt
Samantha Davenport
Janice Dugliss
Kitty Erlacher
Pamela Farr
Linda Fields
Doc Billingsley
Judy Garrett
Lee Gernert-Larrea
Janice T. Glover
Victoria Hamilton
Ann Hayes
Geoffrey Heywood
Patricia Jackson
Jack James
Elise Johnson-Schmidt
Margaret Koontz

Claire Kovacs
Virginia Caum Lake
Laurie Liberatore
James Mead
Katherine Miller
Carol Ann Mitchell
Delaney Moag
James Mullen
Christine Nightingale
Judy O’Connell
Mary Passage
C.F. Payne
Kathy Pilling-Whitney
Judith Prentice
Kristen Rajskey
Sheila Reed
Georgia A. Reynolds
Louise Richardson
Missy Rittenhouse
Theresa Rossettie

Betty Santandrea
Mark Schmidt
Brian Short
Katie Sirrine
Emily Smith
Pamela Sonnefeld
Marilynn Sullivan
Alice Thompson
Katherine Wadsworth
Stacy Ward
Ann Welles
Dorothy Wenzel
Michiko Yamaguchi
Charis Zembek

Organization
David A. Howe Public Library
Elkland Area Community Library
Hornell Public Library
Southeast Steuben County Library



GRANTS + DONATIONS

CONTRIBUTORS

Thank you to the following individuals who designated their gifts for general support, annual appeal, exhibitions, events, and education:

\$15,000+
Janice and Ken Freeman
Mary Spurrier

\$5,000+
Toby Wollin and Darryl M. Wood

\$2,500+
Melissa Gambol
Elise Johnson-Schmidt and Family

\$1,000+
Ann and David Grossman
Kevin and Joyce Parks

\$500+
Marie H. Cole
James Flaws and Marcia Weber
Catherine Powell

\$250+
Anonymous (2)
Ruth Bruning
Martin and Susan Curran
Charlotte and Marcus Kantz
Anjanette Lecher
Tyler Quanbeck and Ellen Van Cleave
Christopher Russo in memory of Patricia Russo
Vincent and Mary Lee Welch



FOUNDATIONS, CORPORATIONS, AND OTHER ORGANIZATIONS

The Rockwell Museum’s programs are made possible by the New York State Council on the Arts with support from the office of the Governor and the New York State Legislature.

Very special thanks to Corning Incorporated Community Impact and Investment for their ongoing support.

19 Ideas
The Anderson Foundation, Inc.
Art Bridges
Corning Credit Union
CCU Wealth Strategies
Chemung Canal Trust Company
CJSS Skillern Family Art Museum
Community Foundation of Elmira-
Corning and the Finger Lakes, Inc.
Corning Credit Union
Corning Inc Community Impact and Investment
Crystal Cleaners
Dippity Do Dahs
First Heritage Federal Credit Union
Guthrie
LeChase Construction
M&T Bank
National Endowment for the Arts
Rose’s Youth Philanthropists
Siemens Energy
Smithsonian Institution
Swan Morss Insurance
Ted Goldwyn Communications

The Anderson Foundation, Inc.
The Hilliard Foundation
The Triangle Fund
The Tripp Foundation
Tioga Downs Regional Community Foundation
Wegmans
Williams Toyota



STAFF + BOARD + VOLUNTEERS

Staff

Erin M. Coe
Executive Director
(Appointed, November 2024)

Katherine Banerjee
Associate Curator

Kristen Bocek-Kahn
Operations Manager

Lukas Brown
Retail and Guest Services Assistant Manager

Paul Dressen
Preparator

Katherine Fultz
Education Specialist

Lisa Gill
Interim Executive Director
+ *Director of Finance and Operations*

Sherry Kirk
Executive Liaison and Financial Assistant

Amanda Lett
Curator of Collections and Exhibitions

Katharine Mead
Membership and Grants Manager

Mary Mix
Director of Education

Ann Recotta
Education and Volunteer Programs Coordinator

Rita Reed
Retail and Guest Services Manager

Amy Ruza
Youth and Visitor Engagement Educator

Emily Smith
Registrar

Jess Spady
Communications and Digital Media Manager

Janelle Steiner
Programs and Events Manager

Bryn Van Horne
Marketing & Advancement Assistant

Willa Vogel
Director of Advancement and Communications

Guest Services

Nicholas Drake
Sylvia Kete
Felicia Lash
Nancy McGrath
Katie Reilly
Candy Sanky
Emily Stein
Megan Walsh
Thea Zwier

Security

Denise Sarro
Matthew Vine

Volunteers

Jan Altilio
Linda Baxter
Julie Biviano
Pat Ciccariello
Michaela Cosgrove
Nancy Douth
Kathi Dwyer
Mary Franklin
Clare Gunther
Roberta Hirliman
John Jetty
Janet Johnson

Jacqueline Knitter
Pam Lally
Judy O'Connell
Nancy O'Loughlin
Pam Schmitt
Bev Stevens
Judy Thomas
Scott Vonderheide
Alexander Whydell
Lorraine Williams

Board of Trustees | Officers

Melissa Gambol
President

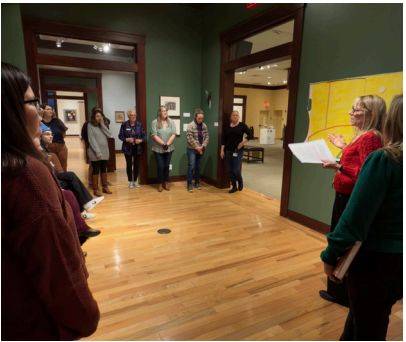
Joy Macafee
Vice President

Autumn M. Pawlowski
Treasurer

Tyler Quanbeck
Secretary

Board of Trustees | Trustees

Colleen Caravati
Maarit Clay
Laura Coleman
Maria Goldwyn
Denise A. Hauselt
Nicholas LaPuma
Ashley Lomboy
Barry Nicholson
Tom Pisano
Emily Simon
John M. Tobin
Camille Torres
Paul VerValin
Sandra Zuraski





111 Cedar Street
Corning, New York 14830

607-937-5386
info@RockwellMuseum.org
RockwellMuseum.org

[@RockwellMuseum](https://www.instagram.com/RockwellMuseum)

