

Social Story for Visiting The Rockwell Museum

We are going to The Rockwell Museum. They have art that tells a story about the American experience. Some of the art is hundreds of years old, while some was made recently.



We will get on a bus and ride to the Museum. When we go inside, we will stay close to our adult. The entrance door can open automatically, or we can push it open.



When we come into the Museum, someone will show us where the coat closet is and help us get ready for our tour.



If we have food or drinks, we must leave them at the front desk. We can pick them up when we are ready to leave.

If we have coats that we don't want to wear inside, we can leave them in the coat room. There is a wheelchair there for people to borrow.



The artwork is on three floors. The Museum helper will introduce us to the docent (tour guide, museum teacher). We may take the stairs or the elevator with our group to the first stop.



While we are in the Museum, we will remember to not touch the artwork and we will be respectful to others.



If we need to use the restroom, we can tell someone and take a break at any time. The restrooms are on Floor 1M, near the Spotlight Gallery. We can get there by using the elevator or stairs.



There will be security guards in the museum. They are there to help people and to keep the art safe. If I get lost and can't find my adult, I can tell one of the security guards. We will recognize the security guards because they will have a special uniform.



If I need to take a break I will tell my adult. Benches are available throughout the Museum if I want to take a quiet moment to sit and relax.



The galleries may be very quiet with no other people.



The galleries may be noisy with people talking.



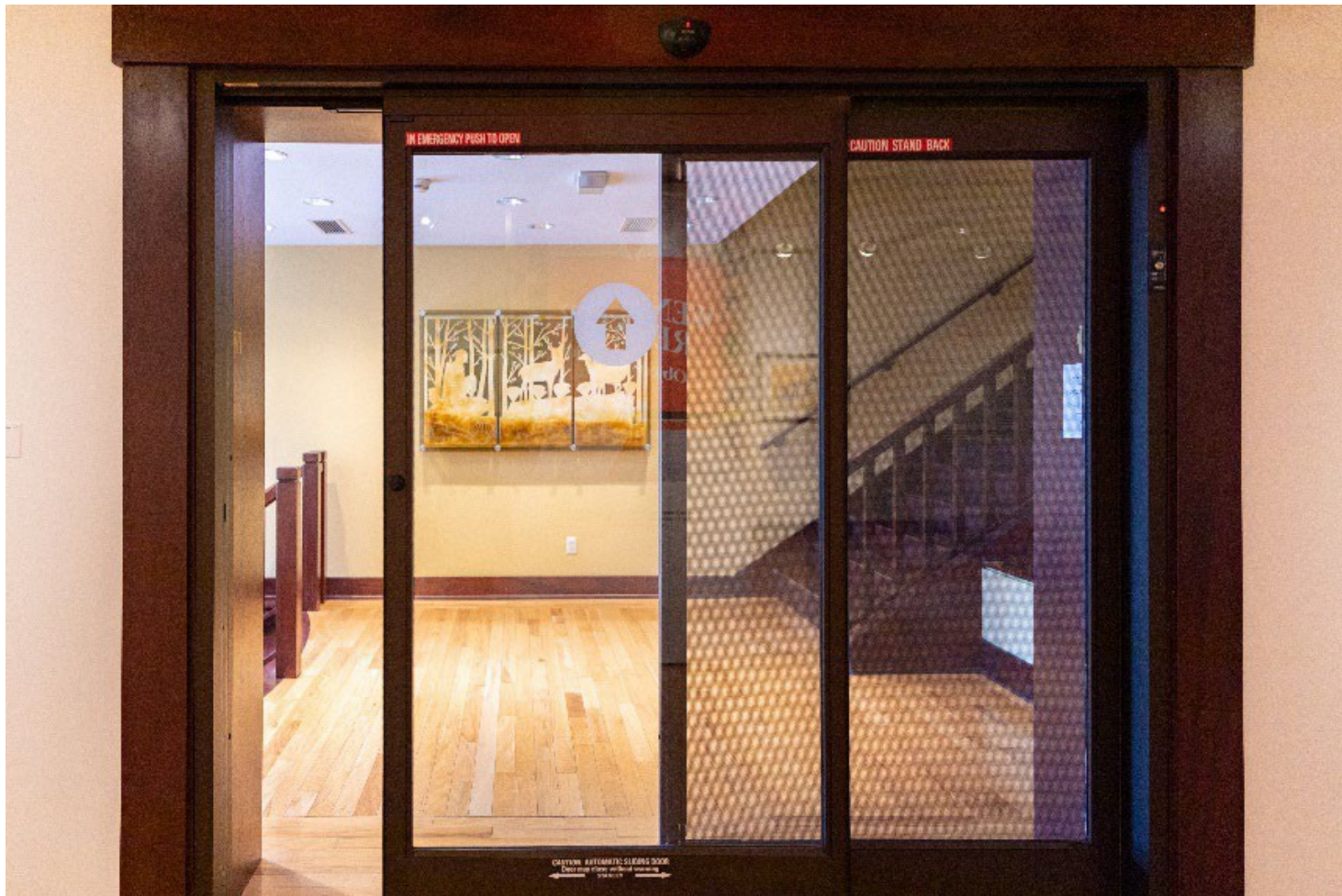
If there is a tour group or something noisy going on, I can use my headphones to block noises.



The Southwest Lodge Gallery is on the Second Floor. It is a big room with wood floors and can seem loud. I can wear headphones if I want to.



The Spotlight Gallery on Floor 1M has “motion sensor” doors that slide open when we get close to them.



We might go to the Education Center. The doors will open when you push a button. There are tables and chairs inside. We make projects in this room.



We can look for boxes like these on Floor 2 and Floor 3 for sensory objects to use while I'm visiting.



We will stay in the Museum until it is time for our class to get on the bus and go back to school.



Goodbye! Come back soon!

